

CoraLite® Plus 488-conjugated MYH1 Monoclonal antibody

Catalog Number: **CL488-67299**

Basic Information

Catalog Number:

CL488-67299

Size:

1000 µg/ml

Source:

Mouse

Isotype:

IgG2a

Immunogen Catalog Number:

AG17129

GenBank Accession Number:

BC114545

GeneID (NCBI):

4619

UNIPROT ID:

P12882

Full Name:

myosin, heavy chain 1, skeletal muscle, adult

Calculated MW:

1939 aa, 223 kDa

Observed MW:

220 kDa

Purification Method:

Protein A purification

CloneNo.:

1G10H9

Recommended Dilutions:

IF-P 1:50-1:500

Excitation/Emission maxima wavelengths:

493 nm / 522 nm

Applications

Tested Applications:

IF-P

Species Specificity:

Human, mouse, pig

Positive Controls:

IF-P: mouse skeletal muscle tissue,

Background Information

MYH1 (MyHC-2x) encodes the IIX isoform of myosin heavy chain (MyHC). Myosin is a large, ubiquitous, motor protein that generates force through its interaction with actin, thus involving it in a number of cellular processes including cytokinesis, karyokinesis, cell migration, and muscle contraction. Muscle fibers can be divided as type 1 (slow) and type 2 (fast). MYH1 belongs to type 2.

Storage

Storage:

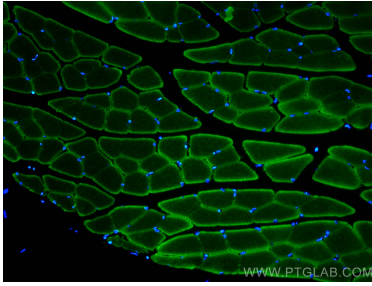
Store at -20°C. Avoid exposure to light. Stable for one year after shipment.

Storage Buffer:

PBS with 50% Glycerol, 0.05% Proclin300, 0.5% BSA, pH 7.3.

Aliquoting is unnecessary for -20°C storage

Selected Validation Data



Immunofluorescent analysis of (4% PFA) fixed mouse skeletal muscle tissue using CoraLite® Plus 488 MYH1 antibody (CL488-67299, Clone: 1G10H9) at dilution of 1:200.