

For Research Use Only

CoraLite® Plus 488-conjugated Collagen Type I Monoclonal antibody

Catalog Number: CL488-67288

1 Publications



Basic Information

Catalog Number:

CL488-67288

Size:

1000 ug/ml

Source:

Mouse

Isotype:

IgG1

GenBank Accession Number:

NM_000088

GeneID (NCBI):

1277

UNIPROT ID:

P02452

Full Name:

collagen, type I, alpha 1

Calculated MW:

139 kDa

Observed MW:

120-130 kDa

Purification Method:

Protein G purification

CloneNo.:

1E9A7

Recommended Dilutions:

IF-P 1:50-1:500

Excitation/Emission maxima wavelengths:

493 nm / 522 nm

Applications

Tested Applications:

IF-P

Cited Applications:

IF

Species Specificity:

human, mouse, pig

Cited Species:

human

Positive Controls:

IF-P: human colon cancer tissue, mouse skin tissue

Background Information

Type I collagen, the major structural component of connective tissues such as skin, tendon and bone, is the most abundant and widely expressed collagen in humans (PMID: 7620364; 8645190; 9016532). Type I collagen is a heterotrimer comprising one alpha 2(I) and two alpha 1(I) chains which are encoded by the unlinked loci COL1A2 and COL1A1 respectively. Mutations in COL1A1 are associated with osteogenesis imperfecta types I-IV, Ehlers-Danlos syndrome type VIIA, Ehlers-Danlos syndrome Classical type, Caffey Disease and idiopathic osteoporosis. This antibody raised against a synthesized peptide corresponding to 1206-1218 aa of human pro-alpha 1 chain of type I collagen recognize collagen alpha-1(I) chain.

Notable Publications

Author	Pubmed ID	Journal	Application
Arun Das	37563850	J Med Virol	IF

Storage

Storage:

Store at -20°C. Avoid exposure to light. Stable for one year after shipment.

Storage Buffer:

PBS with 50% Glycerol, 0.05% Proclin300, 0.5% BSA, pH 7.3.

Aliquoting is unnecessary for -20°C storage

For technical support and original validation data for this product please contact:

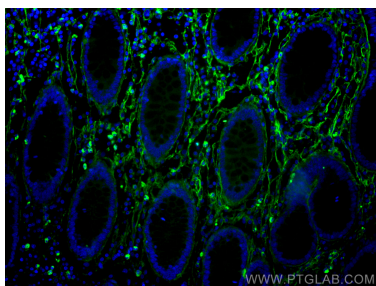
T: 4006900926

E: Proteintech-CN@ptglab.com

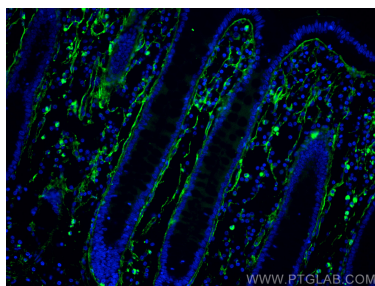
W: ptgcn.com

This product is exclusively available under Proteintech Group brand and is not available to purchase from any other manufacturer.

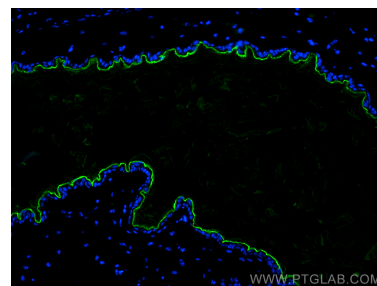
Selected Validation Data



Immunofluorescent analysis of (4% PFA) fixed human colon cancer tissue using Coralite® Plus 488 Collagen Type I antibody (CL488-67288, Clone: 1E9A7) at dilution of 1:200.



Immunofluorescent analysis of (4% PFA) fixed human colon cancer tissue using Coralite® Plus 488 Collagen Type I antibody (CL488-67288, Clone: 1E9A7) at dilution of 1:200.



Immunofluorescent analysis of (4% PFA) fixed paraffin-embedded mouse skin tissue using Coralite® Plus 488 Collagen Type I antibody (CL488-67288, Clone: 1E9A7) at dilution of 1:200. Heat mediated antigen retrieval with Tris-EDTA buffer (pH 9.0).