

For Research Use Only

# CoraLite® Plus 488-conjugated Ins1 Monoclonal antibody



Catalog Number: **CL488-67284**

## Basic Information

Catalog Number:

CL488-67284

Size:

1000 µg/ml

Source:

Mouse

Isotype:

IgG2a

Immunogen Catalog Number:

AG28809

GenBank Accession Number:

NM\_019129.3

GeneID (NCBI):

24505

UNIPROT ID:

P01322

Full Name:

insulin 1

Calculated MW:

12 kDa

Purification Method:

Protein A purification

CloneNo.:

3A11C1

Recommended Dilutions:

IF-P 1:150-1:600

Excitation/Emission maxima  
wavelengths:

493 nm / 522 nm

## Applications

Tested Applications:

IF-P

Species Specificity:

Rat, mouse

Positive Controls:

IF-P : rat pancreas tissue, mouse pancreas tissue

## Background Information

### Storage

Storage:

Store at -20°C. Avoid exposure to light. Stable for one year after shipment.

Storage Buffer:

PBS with 50% Glycerol, 0.05% Proclin300, 0.5% BSA, pH 7.3.

Aliquoting is unnecessary for -20°C storage

For technical support and original validation data for this product please contact:

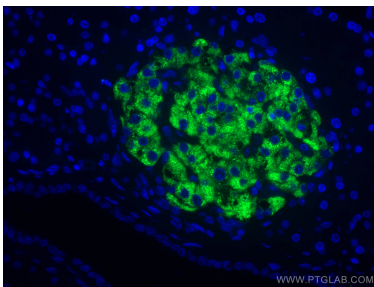
T: 4006900926

E: [Proteintech-CN@ptglab.com](mailto:Proteintech-CN@ptglab.com)

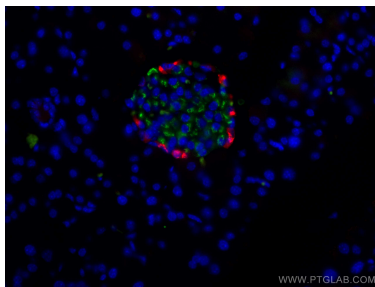
W: [ptgcn.com](http://ptgcn.com)

This product is exclusively available under Proteintech Group brand and is not available to purchase from any other manufacturer.

## Selected Validation Data



Immunofluorescent analysis of (4% PFA) fixed rat pancreas tissue using CoraLite® Plus 488-conjugated Ins1 antibody (CL488-67284, Clone: 3A11C1 ) at dilution of 1:300.



Immunofluorescent analysis of (4% PFA) fixed mouse pancreas tissue using CoraLite® Plus 488 Ins1 antibody (CL488-67284, Clone: 3A11C1 ) at dilution of 1:200, CoraLite® 594 Glucagon antibody (CL594-67286, Clone: 2A8G1, red).