

# CoraLite® Plus 488-conjugated BCR Monoclonal antibody

Catalog Number: **CL488-67260**

## Basic Information

**Catalog Number:**

CL488-67260

**Size:**

1000 µg/ml

**Source:**

Mouse

**Isotype:**

IgG2b

**Immunogen Catalog Number:**

AG28953

**GenBank Accession Number:**

BC066122

**GeneID (NCBI):**

613

**UNIPROT ID:**

P11274

**Full Name:**

breakpoint cluster region

**Calculated MW:**

143 kDa

**Observed MW:**

150-160 kDa

**Purification Method:**

Protein A purification

**CloneNo.:**

2C2E3

**Excitation/Emission maxima wavelengths:**

493 nm / 522 nm

## Applications

**Tested Applications:**

FC (Intra)

**Species Specificity:**

Human, rat

## Background Information

The Bcr gene, mapping on chromosome22, was originally identified by its presence in the chimeric Bcr-Abl oncogene. The Bcr gene encodes for the break point cluster region protein(Bcr). Although the BCR-ABL fusion protein has been extensively studied, the function of the normal BCR gene product is not clear. The protein has serine/threonine kinase activity and is a GTPase-activating protein for RAC1 and CDC42. A chromosomal aberration involving BCR has been found in patients with chronic myeloid leukemia.

## Storage

**Storage:**

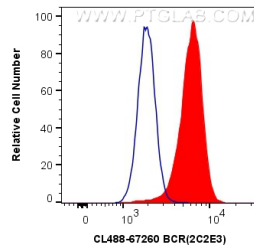
Store at -20°C. Avoid exposure to light. Stable for one year after shipment.

**Storage Buffer:**

PBS with 50% Glycerol, 0.05% Proclin300, 0.5% BSA, pH 7.3.

Aliquoting is unnecessary for -20°C storage

## Selected Validation Data



1X10<sup>6</sup> K-562 cells were intracellularly stained with 0.4 ug CoraLite® Plus 488 Anti-Human BCR (CL488-67260, Clone:2C2E3) (red), or 0.4 ug Mouse IgG2b Isotype Control (CL488-66360-3, Clone: K11B8C4B5) (blue). Cells were fixed with 4% PFA and permeabilized with Flow Cytometry Perm Buffer (PF00011-C).