

CoraLite® Plus 488-conjugated FUCA1 Monoclonal antibody

Catalog Number: CL488-67251

Basic Information

Catalog Number:

CL488-67251

Size:

1000 µg/ml

Source:

Mouse

Isotype:

IgG2b

Immunogen Catalog Number:

AG9638

GenBank Accession Number:

BC017338

GeneID (NCBI):

2517

UNIPROT ID:

P04066

Full Name:

fucosidase, alpha-L-1, tissue

Calculated MW:

461 aa, 53 kDa

Observed MW:

50-56 kDa

Purification Method:

Protein A purification

CloneNo.:

1G5C5

Recommended Dilutions:

IF-P 1:50-1:500

IF/ICC 1:50-1:500

Excitation/Emission maxima wavelengths:

493 nm / 522 nm

Applications

Tested Applications:

IF/ICC, IF-P

Species Specificity:

human, mouse

Positive Controls:

IF-P : human liver cancer tissue,

IF/ICC : HepG2 cells,

Background Information

FUCA1(α-L-Fucosidase) is a lysosomal glycosidase which is ubiquitous in eukaryotic cells. This enzyme is usually found as a soluble component of the lysosome and functions as an acid hydrolase in the degradation of numerous and diverse fucoglycoconjugates. The mammalian α-L-fucosidases are relatively large, multisubunit glycoproteins which exist in multiple molecular isoforms. This enzyme may have a role in sperm-egg interactions in the reproductive tract of the female rat. There is a precursor 54 kDa form of rat sperm fucosidase which is processed to a mature 52 kDa form of the enzyme (PMID:8836125). This protein from rat epididymis is a tetramer of 210-220 kDa, made up by two pairs of subunits of 47 and 60 kDa, and the one from human seminal plasma exists in different oligomeric forms, that is, as a dimer, as a tetramer, and as a hexamer made up of a single subunit of 56-57 kDa (PMID:16736526).

Storage

Storage:

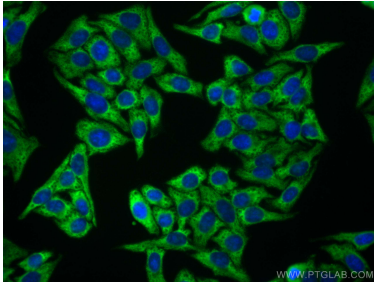
Store at -20°C. Avoid exposure to light. Stable for one year after shipment.

Storage Buffer:

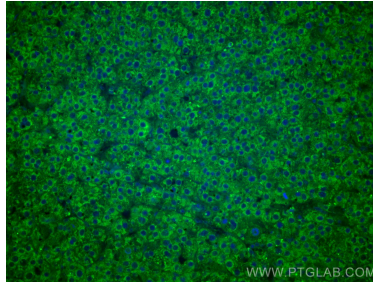
PBS with 50% Glycerol, 0.05% Proclin300, 0.5% BSA, pH 7.3.

Aliquoting is unnecessary for -20°C storage

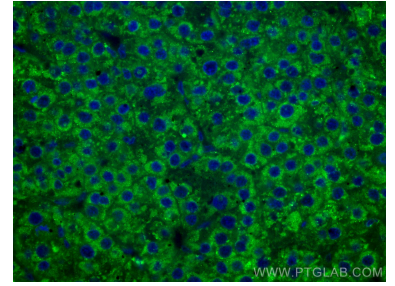
Selected Validation Data



Immunofluorescent analysis of (-20°C Ethanol) fixed HepG2 cells using CoraLite® Plus 488 FUCA1 antibody (CL488-67251, Clone: 1G5C5) at dilution of 1:200.



Immunofluorescent analysis of (4% PFA) fixed human liver cancer tissue using CoraLite® Plus 488 FUCA1 antibody (CL488-67251, Clone: 1G5C5) at dilution of 1:200. DAPI (blue).



Immunofluorescent analysis of (4% PFA) fixed human liver cancer tissue using CoraLite® Plus 488 FUCA1 antibody (CL488-67251, Clone: 1G5C5) at dilution of 1:200. DAPI (blue).