

CoraLite® Plus 488-conjugated GCK Monoclonal antibody

Catalog Number: **CL488-67216**

Basic Information

Catalog Number:

CL488-67216

Size:

1000 µg/ml

Source:

Mouse

Isotype:

IgG1

Immunogen Catalog Number:

AG8116

GenBank Accession Number:

BC001890

GeneID (NCBI):

2645

UNIPROT ID:

P35557

Full Name:

glucokinase (hexokinase 4)

Calculated MW:

52 kDa

Observed MW:

52 kDa

Purification Method:

Protein G purification

CloneNo.:

1C3A3

Recommended Dilutions:

IF-P 1:50-1:500

Excitation/Emission maxima wavelengths:

493 nm / 522 nm

Applications

Tested Applications:

IF-P

Species Specificity:

Human, Mouse, Rat, Pig

Positive Controls:

IF-P : human liver cancer tissue,

Background Information

Glucokinase (GCK) is a structurally and functionally unique member of hexokinase family. It is expressed only in mammalian liver and pancreatic islet beta cells. Because of its unique functional characteristics, the enzyme plays an important regulatory role in glucose metabolism. The rate of glucose metabolism in liver and pancreas is a function of the activity of the enzyme (PMID:1740341). Moreover, GCK has been found to have relationship with diabetes. Defects in GCK are the cause of maturity-onset diabetes of the young type 2 (MODY2) and familial hyperinsulinemic hypoglycemia type 3 (HHF3). It has 3 isoforms produced by alternative splicing with the same molecular mass of 52 kDa.

Storage

Storage:

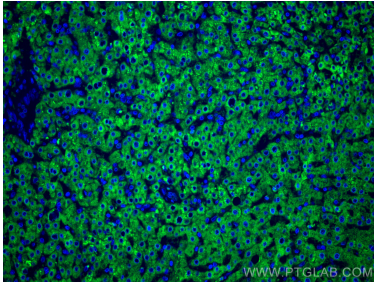
Store at -20°C. Avoid exposure to light.

Storage Buffer:

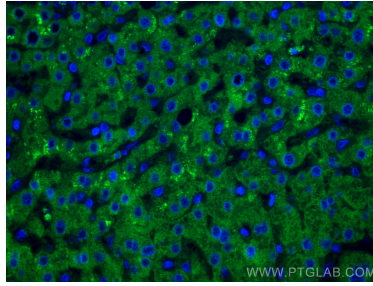
PBS with 50% Glycerol, 0.05% Proclin300, 0.5% BSA, pH 7.3.

Aliquoting is unnecessary for -20°C storage

Selected Validation Data



Immunofluorescent analysis of (4% PFA) fixed human liver cancer tissue using CoraLite® Plus 488 GCK antibody (CL488-67216, Clone: 1C3A3) at dilution of 1:200.



Immunofluorescent analysis of (4% PFA) fixed human liver cancer tissue using CoraLite® Plus 488 GCK antibody (CL488-67216, Clone: 1C3A3) at dilution of 1:200.