

For Research Use Only

CoraLite® Plus 488-conjugated WNT10B Monoclonal antibody



Catalog Number: **CL488-67210**

Basic Information

Catalog Number: CL488-67210	GenBank Accession Number: BC096353	Purification Method: Protein G purification
Size: 1000 µg/ml	GeneID (NCBI): 7480	CloneNo.: 1G11E4
Source: Mouse	UNIPROT ID: O00744	Recommended Dilutions: IF/ICC 1:50-1:500
Isotype: IgG1	Full Name: wingless-type MMTV integration site family, member 10B	Excitation/Emission maxima wavelengths: 493 nm / 522 nm
Immunogen Catalog Number: AG17114	Calculated MW: 389 aa, 43 kDa	
	Observed MW: 43 kDa	

Applications

Tested Applications: IF/ICC, FC (Intra)	Positive Controls: IF/ICC : HeLa cells,
Species Specificity: Human	

Background Information

Wnt10b is a member of the Wnt ligand gene family that encodes for secreted proteins, which activate the ancient and highly conserved Wnt signalling cascade. This antibody can be detected a band of 43 kDa.

Storage

Storage:
Store at -20°C. Avoid exposure to light. Stable for one year after shipment.
Storage Buffer:
PBS with 50% Glycerol, 0.05% Proclin300, 0.5% BSA, pH 7.3.
Aliquoting is unnecessary for -20°C storage

For technical support and original validation data for this product please contact:

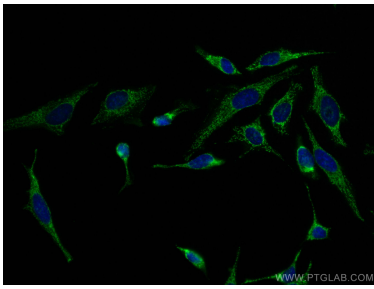
T: 4006900926

E: Proteintech-CN@ptglab.com

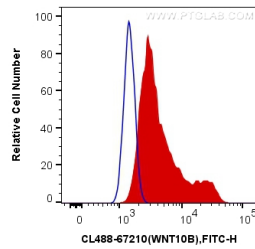
W: ptgcn.com

This product is exclusively available under Proteintech Group brand and is not available to purchase from any other manufacturer.

Selected Validation Data



Immunofluorescent analysis of (-20°C Methanol) fixed HeLa cells using CoraLite® Plus 488 WNT10B antibody (CL488-67210, Clone: 1G11E4) at dilution of 1:200.



1X10⁶ HeLa cells were intracellularly stained with 0.4 ug CoraLite® Plus 488 Anti-Human WNT10B (CL488-67210, Clone:1G11E4) (red), or 0.4 ug Mouse IgG1 Isotype Control (CL488-66360, Clone: T1F8D3F10) (blue). Cells were fixed with 4% PFA and permeabilized with Flow Cytometry Perm Buffer (PF00011-C).