

For Research Use Only

# CoraLite® Plus 488-conjugated STMN2 Monoclonal antibody

Catalog Number: CL488-67204



## Basic Information

Catalog Number:

CL488-67204

Size:

1000 µg/ml

Source:

Mouse

Isotype:

IgG1

Immunogen Catalog Number:

AG28990

GenBank Accession Number:

BC006302

GeneID (NCBI):

11075

UNIPROT ID:

Q93045

Full Name:

stathmin-like 2

Calculated MW:

21 kDa

Observed MW:

22 kDa

Purification Method:

Protein A purification

CloneNo.:

1F6C4

Recommended Dilutions:

IF/ICC 1:50-1:500

Excitation/Emission maxima wavelengths:

493 nm / 522 nm

## Applications

Tested Applications:

IF/ICC, FC (Intra)

Species Specificity:

human, mouse, rat, pig

Positive Controls:

IF/ICC : SH-SY5Y cells,

## Background Information

STMN2 gene encodes a SCG10 (superior cervical ganglion-10) protein, a regulator of microtubule stability. When phosphorylated by MAPK8, SCG10 stabilizes microtubules and consequently controls neurite length in cortical neurons. SCG10 was early considered a neuron-specific growth-associated protein in Alzheimer's disease. In the developing brain, SCG10 negatively regulates the rate of exit from multipolar stage and retards radial migration from the ventricular zone.

## Storage

Storage:

Store at -20°C. Avoid exposure to light. Stable for one year after shipment.

Storage Buffer:

PBS with 50% Glycerol, 0.05% Proclin300, 0.5% BSA, pH 7.3.

Aliquoting is unnecessary for -20°C storage

For technical support and original validation data for this product please contact:

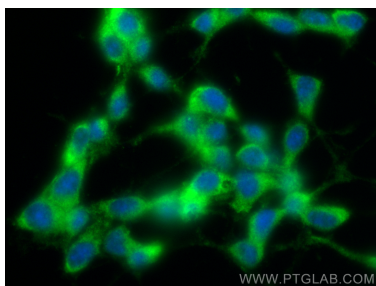
T: 4006900926

E: [Proteintech-CN@ptglab.com](mailto:Proteintech-CN@ptglab.com)

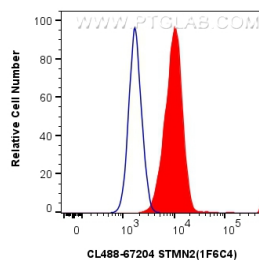
W: [ptgcn.com](http://ptgcn.com)

This product is exclusively available under Proteintech Group brand and is not available to purchase from any other manufacturer.

## Selected Validation Data



Immunofluorescent analysis of (-20°C Ethanol) fixed SH-SY5Y cells using CoraLite® Plus 488 STMN2 antibody (CL488-67204, Clone: 1F6C4 ) at dilution of 1:200.



1x10<sup>6</sup> SH-SY5Y cells were intracellularly stained with 0.4 ug CoraLite® Plus 488-conjugated STMN2 Monoclonal antibody (CL488-67204, Clone:1F6C4) (red), or 0.4 ug CoraLite® Plus 488 Mouse IgG1 Isotype Control (1F8D3) (CL488-66360-1, Clone: 1F8D3) (blue). Cells were fixed with 4% PFA and permeabilized with Flow Cytometry Perm Buffer (PF00011-C).