

For Research Use Only

# CoraLite® Plus 488-conjugated UBE1 Monoclonal antibody



Catalog Number: CL488-67198

## Basic Information

Catalog Number:

CL488-67198

Size:

1000 µg/ml

Source:

Mouse

Isotype:

IgG2a

Immunogen Catalog Number:

AG8920

GenBank Accession Number:

BC013041

GeneID (NCBI):

7317

UNIPROT ID:

P22314

Full Name:

ubiquitin-like modifier activating  
enzyme 1

Calculated MW:

1058 aa, 118 kDa

Observed MW:

114-118 kDa

Purification Method:

Protein A purification

CloneNo.:

1H7E8

Recommended Dilutions:

WB 1:500-1:2000

Excitation/Emission maxima  
wavelengths:

493 nm / 522 nm

## Applications

Tested Applications:

WB

Species Specificity:

Human, mouse, rat

Positive Controls:

WB : HEK-293 cells, NIH/3T3 cells

## Background Information

### Storage

Storage:

Store at -20°C. Avoid exposure to light. Stable for one year after shipment.

Storage Buffer:

PBS with 50% Glycerol, 0.05% Proclin300, 0.5% BSA, pH 7.3.

Aliquoting is unnecessary for -20°C storage

For technical support and original validation data for this product please contact:

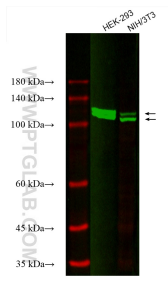
T: 4006900926

E: [Proteintech-CN@ptglab.com](mailto:Proteintech-CN@ptglab.com)

W: [ptgcn.com](http://ptgcn.com)

This product is exclusively available under Proteintech Group brand and is not available to purchase from any other manufacturer.

## Selected Validation Data



Various lysates were subjected to SDS PAGE followed by western blot with CL488-67198 (UBE1 antibody) at dilution of 1:1000 incubated at room temperature for 1.5 hours.