

# CoraLite® Plus 488-conjugated CUL2 Monoclonal antibody

Catalog Number: **CL488-67175**

## Basic Information

**Catalog Number:**

CL488-67175

**Size:**

1000 µg/ml

**Source:**

Mouse

**Isotype:**

IgG1

**Immunogen Catalog Number:**

AG28654

**GenBank Accession Number:**

BC009591

**GeneID (NCBI):**

8453

**UNIPROT ID:**

Q13617

**Full Name:**

cullin 2

**Calculated MW:**

87 kDa

**Observed MW:**

85-90 kDa

**Purification Method:**

Protein G purification

**CloneNo.:**

1A6G9

**Recommended Dilutions:**

IF/ICC 1:50-1:500

**Excitation/Emission maxima  
wavelengths:**

493 nm / 522 nm

## Applications

**Tested Applications:**

IF/ICC

**Species Specificity:**

Human, Rat

**Positive Controls:**

IF/ICC : HeLa cells,

## Background Information

The cullin family proteins are scaffold proteins for the Ring finger type E3 ligases, participating in the proteolysis through the ubiquitin-proteasome pathway. Humans express seven cullin proteins: CUL1-3, CUL4A, CUL4B, CUL5, and CUL7. Each cullin protein can form an E3 ligase similar to the prototype Ring-type E3 ligase Skp1-CUL1-F-box complex. The Cullin-RING-finger type E3 ligases are important regulators in early embryonic development, as highlighted by genetic studies demonstrating that knock-out of CUL1, CUL3, or CUL4A in mice results in early embryonic lethality.

## Storage

**Storage:**

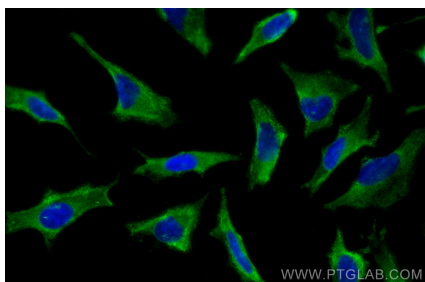
Store at -20°C. Avoid exposure to light. Stable for one year after shipment.

**Storage Buffer:**

PBS with 50% Glycerol, 0.05% Proclin300, 0.5% BSA, pH 7.3.

Aliquoting is unnecessary for -20°C storage

## Selected Validation Data



Immunofluorescent analysis of (-20°C Methanol) fixed HeLa cells using CoraLite® Plus 488 CUL2 antibody (CL488-67175, Clone: 1A6G9 ) at dilution of 1:200.