

For Research Use Only



CoraLite® Plus 488-conjugated TRIB2 Monoclonal antibody

Catalog Number: **CL488-67171**

Basic Information

Catalog Number:

CL488-67171

Size:

1000 µg/ml

Source:

Mouse

Isotype:

IgG1

Immunogen Catalog Number:

AG7501

GenBank Accession Number:

BC002637

GeneID (NCBI):

28951

UNIPROT ID:

Q92519

Full Name:

tribbles homolog 2 (Drosophila)

Calculated MW:

39 kDa

Observed MW:

35-40 kDa

Purification Method:

Protein G purification

CloneNo.:

1A10A6

Recommended Dilutions:

IF/ICC 1:50-1:500

Excitation/Emission maxima
wavelengths:

493 nm / 522 nm

Applications

Tested Applications:

IF/ICC, FC (Intra)

Species Specificity:

human, mouse

Positive Controls:

IF/ICC : A431 cells,

Background Information

Storage

Storage:

Store at -20°C. Avoid exposure to light. Stable for one year after shipment.

Storage Buffer:

PBS with 50% Glycerol, 0.05% Proclin300, 0.5% BSA, pH 7.3.

Aliquoting is unnecessary for -20°C storage

For technical support and original validation data for this product please contact:

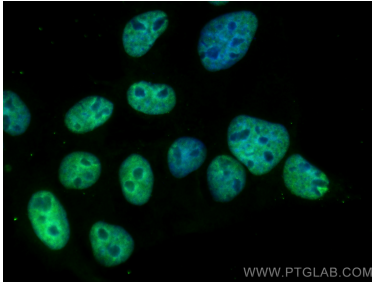
T: 4006900926

E: Proteintech-CN@ptglab.com

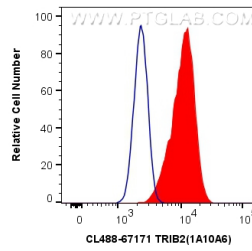
W: ptgcn.com

This product is exclusively available under Proteintech Group brand and is not available to purchase from any other manufacturer.

Selected Validation Data



Immunofluorescent analysis of (4% PFA) fixed A431 cells using CoraLite® Plus 488 TRIB2 antibody (CL488-67171, Clone: 1A10A6) at dilution of 1:200.



1X10⁶ HeLa cells were intracellularly stained with 0.4 ug CoraLite® Plus 488 Anti-Human TRIB2 (CL488-67171, Clone:1A10A6) (red), or 0.4 ug Control Antibody. Cells were fixed with 4% PFA and permeabilized with Flow Cytometry Perm Buffer (PF00011-C).