

# CoraLite® Plus 488-conjugated ACLY

## Monoclonal antibody

Catalog Number: **CL488-67166**

### Basic Information

**Catalog Number:**

CL488-67166

**Size:**

1000 µg/ml

**Source:**

Mouse

**Isotype:**

IgM

**Immunogen Catalog Number:**

AG7709

**GenBank Accession Number:**

BC006195

**GeneID (NCBI):**

47

**UNIPROT ID:**

P53396

**Full Name:**

ATP citrate lyase

**Calculated MW:**

121 kDa

**Observed MW:**

120 kDa

**Purification Method:**

Caprylic acid/ammonium sulfate precipitation

**CloneNo.:**

1E10D5

**Recommended Dilutions:**

IF/ICC 1:50-1:500

**Excitation/Emission maxima wavelengths:**

493 nm / 522 nm

### Applications

**Tested Applications:**

IF/ICC

**Species Specificity:**

Human, Mouse, Rat

**Positive Controls:**

IF/ICC : A549 cells,

### Background Information

ACLY(ATP-citrate synthase) is also named as ACL. It is the primary enzyme responsible for the synthesis of cytosolic acetyl-CoA. ACLY serves as not only a target in oxygenated cells for suppression of lipid synthesis and histone acetylation, but also as a susceptible target in hypoxic cells to restore inhibition of glycolysis. In nonsmall cell lung carcinoma and hepatocellular carcinoma, ACLY is overexpressed compared with normal parenchyma suggesting that ACLY may represent a common target among highly malignant tumors(PMID:19795461). This protein has 2 isoforms produced by alternative splicing.

### Storage

**Storage:**

Store at -20°C. Avoid exposure to light. Stable for one year after shipment.

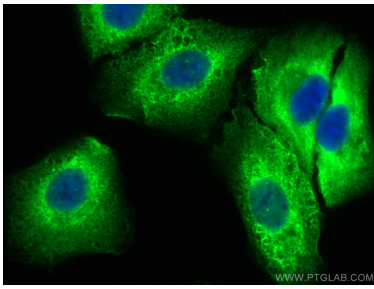
**Storage Buffer:**

PBS with 50% Glycerol, 0.05% Proclin300, 0.5% BSA, pH 7.3.

Aliquoting is unnecessary for -20°C storage

---

## Selected Validation Data



Immunofluorescent analysis of (4% PFA) fixed A549 cells using CoraLite® Plus 488 ACLY antibody (CL488-67166, Clone: 1E10D5 ) at dilution of 1:200.