

# CoraLite® Plus 488-conjugated RASEF Monoclonal antibody

Catalog Number: **CL488-67159**

## Basic Information

<b>Catalog Number:</b> CL488-67159	<b>GenBank Accession Number:</b> BC023566	<b>Purification Method:</b> Protein A purification
<b>Size:</b> 1000 µg/ml	<b>GeneID (NCBI):</b> 158158	<b>CloneNo.:</b> 1C2B2
<b>Source:</b> Mouse	<b>UNIPROT ID:</b> Q8IZ41	<b>Recommended Dilutions:</b> IF/ICC 1:50-1:500
<b>Isotype:</b> IgG2a	<b>Full Name:</b> RAS and EF-hand domain containing	<b>Excitation/Emission maxima wavelengths:</b> 493 nm / 522 nm
<b>Immunogen Catalog Number:</b> AG2149	<b>Calculated MW:</b> 740 aa, 83 kDa	
	<b>Observed MW:</b> 90 kDa	

## Applications

<b>Tested Applications:</b> IF/ICC	<b>Positive Controls:</b> IF/ICC : A431 cells,
<b>Species Specificity:</b> Human	

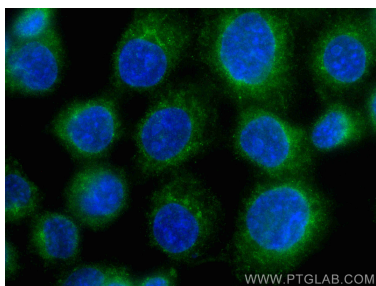
## Background Information

The RASEF (RAS and EF-hand domain-containing protein), a member of Rab GTPase protein family, contains a Rab GTPase domain in the C-terminal region, a coiled coil motif in an internal region as well as 2 EF hand domains which were of importance for binding to calcium ions in the N-terminus.

## Storage

**Storage:**  
Store at -20°C. Avoid exposure to light. Stable for one year after shipment.  
**Storage Buffer:**  
PBS with 50% Glycerol, 0.05% Proclin300, 0.5% BSA, pH 7.3.  
Aliquoting is unnecessary for -20°C storage

## Selected Validation Data



Immunofluorescent analysis of (-20°C Methanol) fixed A431 cells using CoraLite® Plus 488 RASEF antibody (CL488-67159, Clone: 1C2B2 ) at dilution of 1:200.