

For Research Use Only

CoraLite® Plus 488-conjugated LOXL2 Monoclonal antibody



Catalog Number:CL488-67139

Basic Information

Catalog Number:

CL488-67139

Size:

1000 µg/ml

Source:

Mouse

Isotype:

IgG2a

Immunogen Catalog Number:

AG28566

GenBank Accession Number:

BC000594

GeneID (NCBI):

4017

UNIPROT ID:

Q9Y4K0

Full Name:

lysyl oxidase-like 2

Calculated MW:

774 aa, 87 kDa

Observed MW:

100 kDa

Purification Method:

Protein A purification

CloneNo.:

1H7F1

Recommended Dilutions:

WB 1:500-1:1000

Excitation/Emission maxima

wavelengths:

493 nm / 522 nm

Applications

Tested Applications:

WB

Species Specificity:

Human

Positive Controls:

WB : A549 cells, human placenta tissue

Background Information

LOXL2, also named as WS9-14, belongs to an amine oxidase family whose members have been implicated in crosslink formation in stromal collagens and elastin, cell motility, and tumor development and progression. LOXL2 activity might be a crucial modulator of Snail, providing an additional control mechanism of EMT and tumor progression. Increased LOXL2 expression in colon and esophageal cancer may contribute to tumor progression. We detected a band about 100 kd which is a secretory mature LOXL2 protein modified by glycosylation (PMID: 24014025).

Storage

Storage:

Store at -20°C. Avoid exposure to light. Stable for one year after shipment.

Storage Buffer:

PBS with 50% Glycerol, 0.05% Proclin300, 0.5% BSA, pH 7.3.

Aliquoting is unnecessary for -20°C storage

For technical support and original validation data for this product please contact:

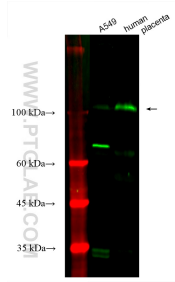
T: 4006900926

E: Proteintech-CN@ptglab.com

W: ptgcn.com

This product is exclusively available under Proteintech Group brand and is not available to purchase from any other manufacturer.

Selected Validation Data



Various lysates were subjected to SDS PAGE followed by western blot with CL488-67139 (LOXL2 antibody) at dilution of 1:800 incubated at room temperature for 1.5 hours.