

# CoraLite® Plus 488-conjugated CYP3A4 Monoclonal antibody

Catalog Number: CL488-67110

1 Publications

## Basic Information

## Catalog Number:

CL488-67110

## Size:

1000 µg/ml

## Source:

Mouse

## Isotype:

IgG1

## Immunogen Catalog Number:

AG13074

## GenBank Accession Number:

BC101631

## GeneID (NCBI):

1576

## UNIPROT ID:

P08684

## Full Name:

cytochrome P450, family 3, subfamily A, polypeptide 4

## Calculated MW:

503 aa, 57 kDa

## Observed MW:

51-57 kDa

## Purification Method:

Protein G purification

## CloneNo.:

2F11C4

## Recommended Dilutions:

IF/ICC 1:50-1:500

## Excitation/Emission maxima

wavelengths:  
493 nm / 522 nm

## Applications

## Tested Applications:

IF/ICC, FC (Intra)

## Cited Applications:

IF

## Species Specificity:

human, mouse, rat, pig

## Cited Species:

human

## Positive Controls:

IF/ICC : HepG2 cells,

## Background Information

Cytochrome P450 3A(CYP3A) belongs to the cytochrome P450 family and the enzymes constitute an important detoxification system that contributes to primary metabolism of more than half of all prescribed medications. CYP3A expression determines impairment of drug absorption and efficient systemic clearance in a tissue-specific manner (PMID:17975676). The murine homolog of human CYP3A4 is CYP3A11 (PMID: 19297428). The highest amounts of drug-metabolizing cytochromes P-450 are found in the liver and intestine, with lower amounts found in other organs, including the kidney, lung, and brain. LPS that has reached the circulation stimulates a TLR4-dependent mechanism in the periphery, evoking a reduction in Cyp3a11 expression and metabolism in the liver (PMID: 15878984).

## Notable Publications

Author	Pubmed ID	Journal	Application
Wildan Mubarak	38696441	ACS Appl Bio Mater	IF

## Storage

## Storage:

Store at -20°C. Avoid exposure to light. Stable for one year after shipment.

## Storage Buffer:

PBS with 50% Glycerol, 0.05% Proclin300, 0.5% BSA, pH 7.3.

Aliquoting is unnecessary for -20°C storage

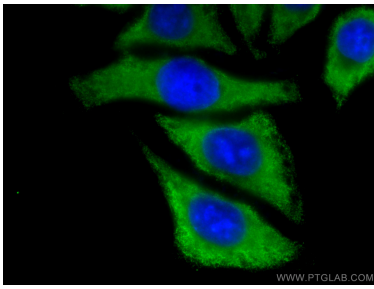
For technical support and original validation data for this product please contact:

T: 4006900926

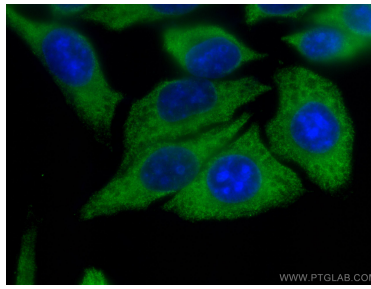
E: [Proteintech-CN@ptglab.com](mailto:Proteintech-CN@ptglab.com)W: [ptgcn.com](http://ptgcn.com)

This product is exclusively available under Proteintech Group brand and is not available to purchase from any other manufacturer.

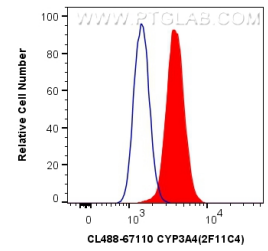
## Selected Validation Data



Immunofluorescent analysis of (-20°C Methanol) fixed HepG2 cells using CoraLite® Plus 488 CYP3A4 antibody (CL488-67110, Clone: 2F11C4 ) at dilution of 1:200.



Immunofluorescent analysis of (-20°C Methanol) fixed HepG2 cells using CoraLite® Plus 488 CYP3A4 antibody (CL488-67110, Clone: 2F11C4 ) at dilution of 1:200.



1X10<sup>6</sup> HepG2 cells were intracellularly stained with 0.4 ug CoraLite® Plus 488 Anti-Human CYP3A4 (CL488-67110, Clone:2F11C4) (red), or 0.4 ug Control Antibody. Cells were fixed with 4% PFA and permeabilized with Flow Cytometry Perm Buffer (PF00011-C).