

For Research Use Only

# CoraLite® Plus 488-conjugated Calpastatin Monoclonal antibody

Catalog Number: CL488-67107



## Basic Information

Catalog Number:

CL488-67107

Source:

Mouse

Isotype:

IgG1

Immunogen Catalog Number:

AG28669

GenBank Accession Number:

BC013579

GeneID (NCBI):

831

UNIPROT ID:

P20810

Full Name:

calpastatin

Calculated MW:

667 aa, 72 kDa

Purification Method:

Protein G purification

CloneNo.:

1G12A2

Recommended Dilutions:

IF/ICC: 1:50-1:500

FC (Intra): 0.80 ug per 10<sup>6</sup> cells in a 100 µl suspension

Excitation/Emission maxima wavelengths:

493 nm / 522 nm

## Applications

Tested Applications:

IF/ICC, FC (Intra)

Species Specificity:

human

Positive Controls:

IF/ICC : HeLa cells,

FC (Intra) : HeLa cells,

## Background Information

### Storage

Storage:

Store at -20°C. Avoid exposure to light. Stable for one year after shipment.

Storage Buffer:

PBS with 50% glycerol, 0.05% Proclin300, 0.5% BSA, pH7.3

Aliquoting is unnecessary for -20°C storage

For technical support and original validation data for this product please contact:

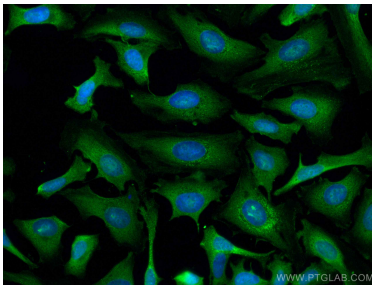
T: 4006900926

E: [Proteintech-CN@ptglab.com](mailto:Proteintech-CN@ptglab.com)

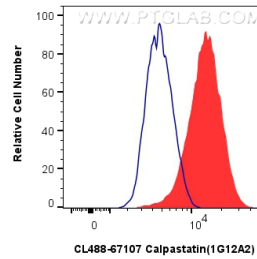
W: [ptgcn.com](http://ptgcn.com)

This product is exclusively available under Proteintech Group brand and is not available to purchase from any other manufacturer.

## Selected Validation Data



Immunofluorescent analysis of (-20°C Ethanol) fixed HeLa cells using CoraLite® Plus 488 Calpastatin antibody (CL488-67107, Clone: 1G12A2) at dilution of 1:200.



1x10<sup>6</sup> HeLa cells were intracellularly stained with 0.8 ug CoraLite® Plus 488-conjugated Calpastatin Monoclonal antibody (CL488-67107, Clone:1G12A2)(red), or 0.8 ug CoraLite® Plus 488 Mouse IgG1 Isotype Control (1F8D3) (CL488-66360-1, Clone: 1F8D3) (blue). Cells were fixed with 4% PFA and permeabilized with Flow Cytometry Perm Buffer.