

CoraLite® Plus 488-conjugated MAD2L2 Monoclonal antibody

Catalog Number: **CL488-67100**

Basic Information

Catalog Number:

CL488-67100

Size:

1000 µg/ml

Source:

Mouse

Isotype:

IgG2b

Immunogen Catalog Number:

AG28233

GenBank Accession Number:

BC015244

GeneID (NCBI):

10459

UNIPROT ID:

Q9UI95

Full Name:

MAD2 mitotic arrest deficient-like 2
(yeast)

Calculated MW:

211 aa, 24 kDa

Observed MW:

24 kDa

Purification Method:

Protein A purification

CloneNo.:

2A4C2

**Excitation/Emission maxima
wavelengths:**

493 nm / 522 nm

Applications

Tested Applications:

FC (Intra)

Species Specificity:

human, mouse, rat

Background Information

MAD family, together with BUB and Mps1,Cdc20k, play roles in the mitotic spindle checkpoint. MAD2L2 is one of the MAD family. It can mediate the second polymerase switching in translation DNA synthesis by mediating the interaction between the error-prone DNA polymerase zeta catalytic subunit REV3L and the inserter polymerase REV1. Through regulation of the JNK-mediate phosphorylation and activation of the transcriptional activator ELK1, MAD2L2 involves in cellular response to DNA damage. Also it has role in the progression of cell cycle and peithelial-mesenchymal transdifferentiation.

Storage

Storage:

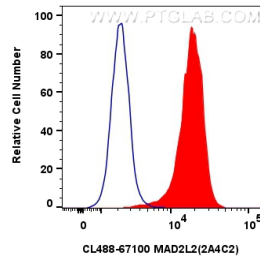
Store at -20°C. Avoid exposure to light. Stable for one year after shipment.

Storage Buffer:

PBS with 50% Glycerol, 0.05% Proclin300, 0.5% BSA, pH 7.3.

Aliquoting is unnecessary for -20°C storage

Selected Validation Data



1×10^6 K-562 cells were intracellularly stained with 0.4 μg CoraLite® Plus 488-conjugated MAD2L2 Monoclonal antibody (CL488-67100, Clone:2A4C2) (red), or 0.4 μg CoraLite® Plus 488 Mouse IgG2b Isotype Control (MPC-11) (CL488-65128, Clone: MPC-11) (blue). Cells were fixed and permeabilized with Transcription Factor Staining Buffer Kit (PF00011).