

For Research Use Only



CoraLite® Plus 488-conjugated ATG9A Monoclonal antibody

Catalog Number: **CL488-67096**

Basic Information

Catalog Number: CL488-67096	GenBank Accession Number: BC065534	Purification Method: Protein G purification
Size: 1000 µg/ml	GeneID (NCBI): 79065	CloneNo.: 1D12E11
Source: Mouse	UNIPROT ID: Q7Z3C6	Recommended Dilutions: IF/ICC 1:50-1:500
Isotype: IgG1	Full Name: ATG9 autophagy related 9 homolog A (S. cerevisiae)	Excitation/Emission maxima wavelengths: 493 nm / 522 nm
Immunogen Catalog Number: AG24278	Calculated MW: 837 aa, 94 kDa	
	Observed MW: 94 kDa	

Applications

Tested Applications: IF/ICC	Positive Controls: IF/ICC : HeLa cells, HepG2 cells
Species Specificity: Human	

Background Information

ATG9A is the only transmembrane ATG protein essential for autophagy. It plays a key role in the organization of the preautophagosomal structure/phagophore assembly site (PAS). It has been reported that ATG9A expression is increased in oral squamous cell carcinoma and breast cancers. The inhibition of ATG9A can lead to an inhibition of cancer cell proliferation and invasion.(PMID: 29437695, 29568063)

Storage

Storage:
Store at -20°C. Avoid exposure to light. Stable for one year after shipment.
Storage Buffer:
PBS with 50% Glycerol, 0.05% Proclin300, 0.5% BSA, pH 7.3.
Aliquoting is unnecessary for -20°C storage

For technical support and original validation data for this product please contact:

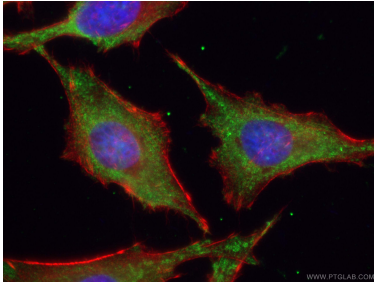
T: 4006900926

E: Proteintech-CN@ptglab.com

W: ptgcn.com

This product is exclusively available under Proteintech Group brand and is not available to purchase from any other manufacturer.

Selected Validation Data



Immunofluorescent analysis of (-20°C Ethanol) fixed HeLa cells using CoraLite® Plus 488-conjugated ATG9A antibody (CL488-67096, Clone: 1D12E11) at dilution of 1:200, CL594-Phalloidin (red).