

# CoraLite® Plus 488-conjugated SDC2 Monoclonal antibody

Catalog Number: **CL488-67088**

## Basic Information

**Catalog Number:**

CL488-67088

**Size:**

1000 µg/ml

**Source:**

Mouse

**Isotype:**

IgG2a

**Immunogen Catalog Number:**

AG5739

**GenBank Accession Number:**

BC049836

**GeneID (NCBI):**

6383

**UNIPROT ID:**

P34741

**Full Name:**

syndecan 2

**Calculated MW:**

22 kDa

**Observed MW:**

22 kDa

**Purification Method:**

Protein A purification

**CloneNo.:**

3A7B2

**Recommended Dilutions:**

WB 1:1000-1:4000

**Excitation/Emission maxima  
wavelengths:**

493 nm / 522 nm

## Applications

**Tested Applications:**

WB

**Species Specificity:**

Human

**Positive Controls:**

WB : A549 cells, HuH-7 cells, L02 cells

## Background Information

SDC2, containing cell surface heparan sulphate proteoglycan, functions as an integral membrane protein and participates in cell proliferation, cell migration, cell adhesion and signal transduction. It has been reported that the expression level of SDC2 will be up-regulated under hypoxia condition which can induce increased release of cytokines and chemokines. Besides, methylated SDC2 can be used as a potential biomarker for early diagnosis of colon cancer. 67088-1-Ig antibody detects the 19 and 22 kDa SDC2 isoforms as well as the 48 kDa dimeric protein in SDS-PAGE. (PMID: 18803305, 23297089, 30022330, 29945573)

## Storage

**Storage:**

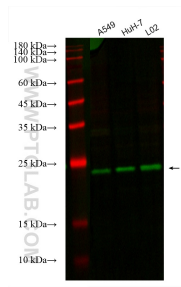
Store at -20°C. Avoid exposure to light. Stable for one year after shipment.

**Storage Buffer:**

PBS with 50% Glycerol, 0.05% Proclin300, 0.5% BSA, pH 7.3.

Aliquoting is unnecessary for -20°C storage

## Selected Validation Data



Various lysates were subjected to SDS PAGE followed by western blot with CL488-67088 (SDC2 antibody) at dilution of 1:2000 incubated at room temperature for 1.5 hours.