

# CoraLite® Plus 488-conjugated CES1 Monoclonal antibody

Catalog Number: **CL488-67079**

## Basic Information

**Catalog Number:**

CL488-67079

**Size:**

1000 µg/ml

**Source:**

Mouse

**Isotype:**

IgG1

**Immunogen Catalog Number:**

AG10647

**GenBank Accession Number:**

BC012418

**GeneID (NCBI):**

1066

**UNIPROT ID:**

P23141

**Full Name:**carboxylesterase 1  
(monocyte/macrophage serine  
esterase 1)**Calculated MW:**

566 aa, 62 kDa

**Observed MW:**

60-63 kDa

**Purification Method:**

Protein G purification

**CloneNo.:**

1C11C1

**Recommended Dilutions:**

IF/ICC 1:50-1:500

**Excitation/Emission maxima  
wavelengths:**

493 nm / 522 nm

## Applications

**Tested Applications:**

IF/ICC

**Species Specificity:**

Human

**Positive Controls:**

IF/ICC : HepG2 cells,

## Background Information

CES1(liver carboxylesterase 1) is also named as CES2, SES1 and belongs to the type-B carboxylesterase/lipase family. The deduced 567-amino acid protein contains a putative 18-amino acid signal peptide and a characteristic C-terminal endoplasmic reticulum retention signal (HXEL). It is the major hydrolytic enzyme responsible for the metabolism of numerous therapeutic agents as well as endogenous substrates. Western blot analysis demonstrated that CES1 is expressed in human liver microsomes (HLM) but not in human intestinal microsomes (HIM) (PMID:19185566).

## Storage

**Storage:**

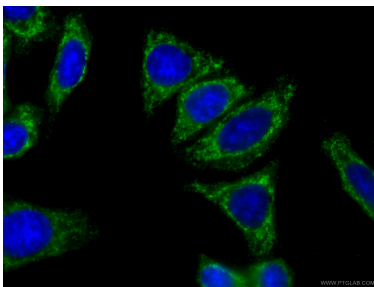
Store at -20°C. Avoid exposure to light.

**Storage Buffer:**

PBS with 50% Glycerol, 0.05% Proclin300, 0.5% BSA, pH 7.3.

Aliquoting is unnecessary for -20°C storage

## Selected Validation Data



Immunofluorescent analysis of (-20°C Ethanol) fixed HepG2 cells using CL488-67079 (CES1 antibody) at dilution of 1:100.