

For Research Use Only



# CoraLite® Plus 488-conjugated APBB1 Monoclonal antibody

Catalog Number: **CL488-67077**

## Basic Information

<b>Catalog Number:</b> CL488-67077	<b>GenBank Accession Number:</b> BC010854	<b>Purification Method:</b> Protein G purification
<b>Size:</b> 1000 µg/ml	<b>GeneID (NCBI):</b> 322	<b>CloneNo.:</b> 1B9G10
<b>Source:</b> Mouse	<b>UNIPROT ID:</b> O00213	<b>Recommended Dilutions:</b> IF-P 1:50-1:500
<b>Isotype:</b> IgG1	<b>Full Name:</b> amyloid beta (A4) precursor protein-binding, family B, member 1 (Fe65)	<b>Excitation/Emission maxima wavelengths:</b> 493 nm / 522 nm
<b>Immunogen Catalog Number:</b> AG27436	<b>Calculated MW:</b> 708 aa, 77 kDa	

## Applications

<b>Tested Applications:</b> IF-P	<b>Positive Controls:</b> IF-P : mouse brain tissue,
<b>Species Specificity:</b> Human, Mouse, Rat, Pig	

## Background Information

APBB1(Amyloid-beta A4 precursor protein-binding family B member 1) encoded FE65 protein. It was known as a binding partner of APP in the Alzheimer's disease studies, and expressed at high levels in brain especially in cerebellum, hippocampus, and cortex. FE65 and FE65-like (FE65L or FE65L1) proteins are cytoplasmic adaptor proteins that possess two phosphotyrosine binding domains (PTB1 and PTB2) and one WW binding domain (PMID:22429478). After phosphorylation modification, the band of FE65 protein would appear around 100 kDa. However, some tested a non-specific band at 55-60 kDa, it was refer to as FE65-like protein(PMID:12843239).

## Storage

**Storage:**  
Store at -20°C. Avoid exposure to light.  
**Storage Buffer:**  
PBS with 50% Glycerol, 0.05% Proclin300, 0.5% BSA, pH 7.3.  
**Aliquoting is unnecessary for -20°C storage**

For technical support and original validation data for this product please contact:

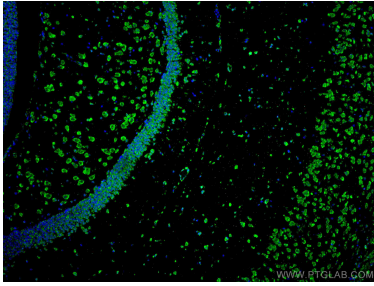
T: 4006900926

E: [Proteintech-CN@ptglab.com](mailto:Proteintech-CN@ptglab.com)

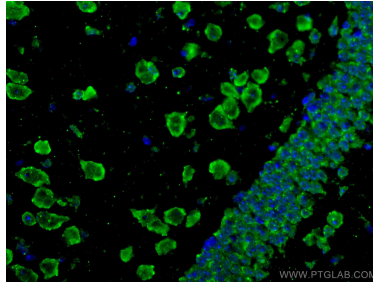
W: [ptgcn.com](http://ptgcn.com)

**This product is exclusively available under Proteintech Group brand and is not available to purchase from any other manufacturer.**

## Selected Validation Data



Immunofluorescent analysis of (4% PFA) fixed mouse brain tissue using CoraLite® Plus 488 APBB1 antibody (CL488-67077, Clone: 1B9G10 ) at dilution of 1:200.



Immunofluorescent analysis of (4% PFA) fixed mouse brain tissue using CoraLite® Plus 488 APBB1 antibody (CL488-67077, Clone: 1B9G10 ) at dilution of 1:200.