

CoraLite[®] Plus 488-conjugated Endoglin/CD105 Monoclonal antibody

Catalog Number: CL488-67075

Basic Information

Catalog Number: CL488-67075	GenBank Accession Number: BC014271	Purification Method: Protein A purification
Size: 1000 µg/ml	GeneID (NCBI): 2022	CloneNo.: 2D5E8
Source: Mouse	UNIPROT ID: P17813	Recommended Dilutions: IF-P 1:50-1:500
Isotype: IgG2b	Full Name: endoglin	Excitation/Emission maxima wavelengths: 493 nm / 522 nm
Immunogen Catalog Number: AG27837	Calculated MW: 71 kDa	
	Observed MW: 95-100 kDa	

Applications

Tested Applications: IF-P	Positive Controls: IF-P : Human liver cancer tissue,
Species Specificity: Human	

Background Information

Endoglin (ENG, CD105) is a homodimeric cell membrane glycoprotein of 180 kDa, composed of disulphide-linked subunits of 95 kDa. Endoglin is a proliferation-associated and hypoxia-inducible protein mainly expressed on vascular endothelial cells. It acts as an accessory receptor for transforming growth factor beta (TGF- β) and is involved in vascular development and remodelling. The important role of Endoglin in angiogenesis and in tumor progression makes it an ideal target for antiangiogenic therapy and a good marker for tumor prognosis. (PMID: 1326540; 14528280; 21737653; 12773481)

Storage

Storage:
Store at -20°C. Avoid exposure to light. Stable for one year after shipment.
Storage Buffer:
PBS with 50% Glycerol, 0.05% Proclin300, 0.5% BSA, pH 7.3.
Aliquoting is unnecessary for -20°C storage

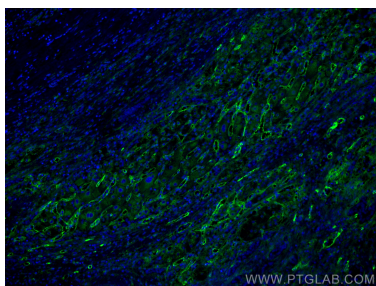
For technical support and original validation data for this product please contact:

T: 4006900926

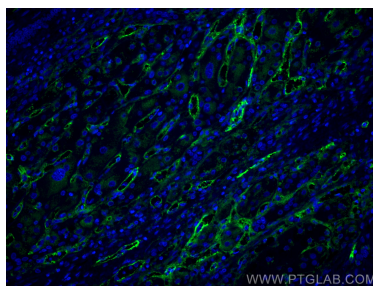
E: Proteintech-CN@ptglab.comW: ptgcn.com

This product is exclusively available under Proteintech Group brand and is not available to purchase from any other manufacturer.

Selected Validation Data



Immunofluorescent analysis of (4% PFA) fixed Human liver cancer tissue using CoraLite® Plus 488 Endoglin/CD105 antibody (CL488-67075, Clone: 2D5E8) at dilution of 1:200.



Immunofluorescent analysis of (4% PFA) fixed Human liver cancer tissue using CoraLite® Plus 488 Endoglin/CD105 antibody (CL488-67075, Clone: 2D5E8) at dilution of 1:200.