

# CoraLite® Plus 488-conjugated C1QA Monoclonal antibody

Catalog Number: **CL488-67063**

## Basic Information

**Catalog Number:**

CL488-67063

**Size:**

1000 µg/ml

**Source:**

Mouse

**Isotype:**

IgG1

**Immunogen Catalog Number:**

AG28622

**GenBank Accession Number:**

BC030153

**GeneID (NCBI):**

712

**UNIPROT ID:**

P02745

**Full Name:**

complement component 1, q  
subcomponent, A chain

**Calculated MW:**

245 aa, 26 kDa

**Observed MW:**

30 kDa

**Purification Method:**

Protein G purification

**CloneNo.:**

1B10E3

**Recommended Dilutions:**

IF/ICC 1:50-1:500

**Excitation/Emission maxima  
wavelengths:**

493 nm / 522 nm

## Applications

**Tested Applications:**

IF/ICC

**Species Specificity:**

Human

**Positive Controls:**

IF/ICC : HepG2 cells,

## Background Information

The first component of complement, C1, is a calcium-dependent complex of the 3 subcomponents C1q, C1r, and C1s. C1q is composed of 18 polypeptide chains: six A-chains, six B-chains, and six C-chains. Each chain contains a collagen-like region located near the N terminus and a C-terminal globular region. Deficiency of C1q has been associated with lupus erythematosus and glomerulonephritis. This antibody is raised against C1qA which is the A-chain polypeptide of human complement subcomponent C1q.

## Storage

**Storage:**

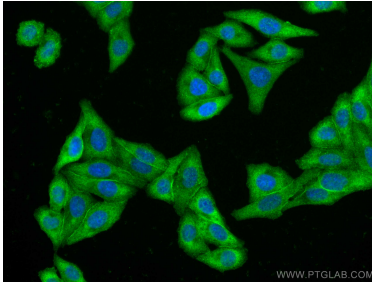
Store at -20°C. Avoid exposure to light.

**Storage Buffer:**

PBS with 50% Glycerol, 0.05% Proclin300, 0.5% BSA, pH 7.3.

Aliquoting is unnecessary for -20°C storage

## Selected Validation Data



Immunofluorescent analysis of (-20°C Ethanol) fixed HepG2 cells using CoraLite® Plus 488 C1QA antibody (CL488-67063, Clone: 1B10E3 ) at dilution of 1:200.