

# CoraLite® Plus 488-conjugated DNASE1L3 Monoclonal antibody

Catalog Number: **CL488-67041**

## Basic Information

**Catalog Number:**

CL488-67041

**Size:**

1000 µg/ml

**Source:**

Mouse

**Isotype:**

IgG2a

**Immunogen Catalog Number:**

AG28187

**GenBank Accession Number:**

BC015831

**GeneID (NCBI):**

1776

**UNIPROT ID:**

Q13609

**Full Name:**

deoxyribonuclease I-like 3

**Calculated MW:**

305 aa, 36 kDa

**Observed MW:**

33-38 kDa

**Purification Method:**

Protein A purification

**CloneNo.:**

1A4D4

**Recommended Dilutions:**

IF/ICC 1:50-1:500

**Excitation/Emission maxima  
wavelengths:**

493 nm / 522 nm

## Applications

**Tested Applications:**

IF/ICC

**Species Specificity:**

Human, mouse

**Positive Controls:**

IF/ICC : HeLa cells,

## Background Information

Deoxyribonuclease 1-like 3 (DNASE1L3, DNase gamma, DNase Y, LS-DNase) is member of a DNASE1 protein family that is identified by similar biochemical properties such as Ca<sup>2+</sup>/Mg<sup>2+</sup>- dependency and an optimal pH of about 7.0 as well as by a high similarity in their nucleic acid and amino acid sequences [PMID:15796714]. It is an endonuclease and cleaves double-stranded DNA (and single-stranded DNA) producing 3' -OH/5' -P ends, which is Ca<sup>2+</sup>/Mg<sup>2+</sup>-dependent and inhibited by Zn<sup>2+</sup>, but not by monomeric actin [PMID:9665719]. In addition, it has been suggested to be involved in apoptotic DNA fragmentation of thymocytes' neuronal PC12 cells, C2C12 myoblasts and of cell lines expressing the recombinant nuclease [PMID: 7957253, 9307016]

## Storage

**Storage:**

Store at -20°C. Avoid exposure to light. Stable for one year after shipment.

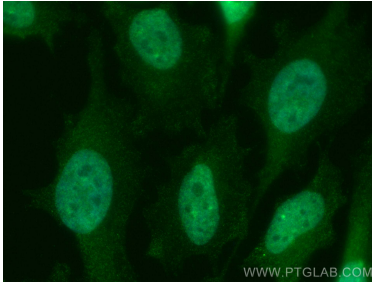
**Storage Buffer:**

PBS with 50% Glycerol, 0.05% Proclin300, 0.5% BSA, pH 7.3.

Aliquoting is unnecessary for -20°C storage

---

## Selected Validation Data



Immunofluorescent analysis of (4% PFA) fixed HeLa cells using CoraLite® Plus 488 DNASE1L3 antibody (CL488-67041, Clone: 1A4D4 ) at dilution of 1:200.