

For Research Use Only

# CoraLite® Plus 488-conjugated NEU1 Monoclonal antibody

Catalog Number: CL488-67032



## Basic Information

Catalog Number:

CL488-67032

Source:

Mouse

Isotype:

IgG1

Immunogen Catalog Number:

AG27945

GenBank Accession Number:

BC011900

GeneID (NCBI):

4758

UNIPROT ID:

Q99519

Full Name:

sialidase 1 (lysosomal sialidase)

Calculated MW:

45 kDa

Observed MW:

45-48 kDa

Purification Method:

Protein G purification

CloneNo.:

1F6D1

Recommended Dilutions:

IF/ICC: 1:50-1:500

Excitation/Emission maxima wavelengths:

493 nm / 522 nm

## Applications

Tested Applications:

IF/ICC

Species Specificity:

human, rat, pig

Positive Controls:

IF/ICC : U-251 cells,

## Background Information

NEU1 (lysosomal sialidase) encodes a kind of lysosomal enzyme that could cleave terminal sialic acids from glycoproteins or glycolipids to regulate various biological processes by conformational change (PMID:28130415). In the lysosome, NEU1 is one member of a heterotrimeric complex, the others are beta-galactosidase and cathepsin A. The NEU1 is widely expressed in mammalian tissues and involved in lysosomal storage disorder sialidosis, autoimmune diseases and the malignancy and metastasis of cancer cells (PMID:19075514). NEU1 also expresses on the plasma membrane where it modulates several signalling molecules about inflammation, exocytosis, phagocytosis, cell adhesion and proliferation (PMID:21928149). Additionally, it is reported that mutations in human NEU1 could lead to sialidosis (PMID:14517945).

## Storage

Storage:

Store at -20°C. Avoid exposure to light. Stable for one year after shipment.

Storage Buffer:

PBS with 50% glycerol, 0.05% Proclin300, 0.5% BSA, pH7.3

Aliquoting is unnecessary for -20°C storage

For technical support and original validation data for this product please contact:

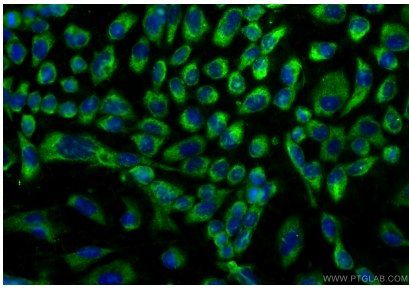
T: 4006900926

E: [Proteintech-CN@ptglab.com](mailto:Proteintech-CN@ptglab.com)

W: [ptgcn.com](http://ptgcn.com)

This product is exclusively available under Proteintech Group brand and is not available to purchase from any other manufacturer.

## Selected Validation Data



Immunofluorescent analysis of (-20°C Ethanol) fixed U-251 cells using CoraLite® Plus 488 NEU1 antibody (CL488-67032, Clone: 1F6D1 ) at dilution of 1:200.