

For Research Use Only

CoraLite® Plus 488-conjugated LSM12 Monoclonal antibody

Catalog Number: CL488-67029

Featured Product



Basic Information

Catalog Number:

CL488-67029

Size:

1000 µg/ml

Source:

Mouse

Isotype:

IgG2a

Immunogen Catalog Number:

AG28782

GenBank Accession Number:

BC044587

GeneID (NCBI):

124801

UNIPROT ID:

Q3MHD2

Full Name:

LSM12 homolog (S. cerevisiae)

Observed MW:

22 kDa

Purification Method:

Protein A purification

CloneNo.:

2E3G3

Excitation/Emission maxima wavelengths:

493 nm / 522 nm

Applications

Tested Applications:

FC (Intra)

Species Specificity:

human, mouse, rat

Background Information

Storage

Storage:

Store at -20°C. Avoid exposure to light. Stable for one year after shipment.

Storage Buffer:

PBS with 50% Glycerol, 0.05% Proclin300, 0.5% BSA, pH 7.3.

Aliquoting is unnecessary for -20°C storage

For technical support and original validation data for this product please contact:

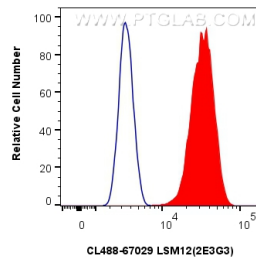
T: 4006900926

E: Proteintech-CN@ptglab.com

W: ptgcn.com

This product is exclusively available under Proteintech Group brand and is not available to purchase from any other manufacturer.

Selected Validation Data



1x10⁶ HeLa cells were intracellularly stained with 0.4 ug CoraLite® Plus 488-conjugated LSM12 Monoclonal antibody (CL488-67029, Clone:2E3G3) (red), or 0.4 ug Mouse IgG2a Isotype Control (CL488-66360-2) (blue). Cells were fixed with 4% PFA and permeabilized with Flow Cytometry Perm Buffer (PF00011-C).