

For Research Use Only

CoraLite® Plus 488-conjugated TIMELESS Monoclonal antibody



Catalog Number: CL488-67022

Basic Information

Catalog Number: CL488-67022	GenBank Accession Number: BC050557	Purification Method: Protein G purification
Size: 1000 µg/ml	GeneID (NCBI): 8914	CloneNo.: 1B6G3
Source: Mouse	UNIPROT ID: Q9UNS1	Excitation/Emission maxima wavelengths: 493 nm / 522 nm
Isotype: IgG1	Full Name: timeless homolog (Drosophila)	
Immunogen Catalog Number: AG6283	Calculated MW: 139 kDa	
	Observed MW: 140 kDa	

Applications

Tested Applications:
FC (Intra)

Species Specificity:
Human, Mouse, Rat

Background Information

TIMELESS1 (TIM1) gene encodes protein timeless homolog belonging to timeless family. TIM1 is localized in nucleus and regulated by cell cycle. It expresses high levels in S, G2 and M phases, and low in G0 and G1 phases. TIM1 is involved in the circadian rhythm autoregulatory loop and is a crucial component of the circadian core oscillator, which includes the CRY proteins, CLOCK, NPAS2, etc. It is also involved in cell survival after DNA damage or replication stress and reported to play important role in epithelial cell morphogenesis and formation of branching tubules.

Storage

Storage:
Store at -20°C. Avoid exposure to light. Stable for one year after shipment.

Storage Buffer:
PBS with 50% Glycerol, 0.05% Proclin300, 0.5% BSA, pH 7.3.

Aliquoting is unnecessary for -20°C storage

For technical support and original validation data for this product please contact:

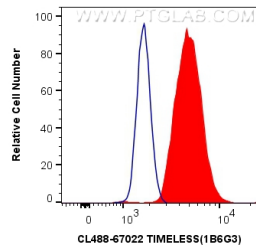
T: 4006900926

E: Proteintech-CN@ptglab.com

W: ptgcn.com

This product is exclusively available under Proteintech Group brand and is not available to purchase from any other manufacturer.

Selected Validation Data



1X10⁶ HEK-293 cells were intracellularly stained with 0.8 ug CoraLite® Plus 488 Anti-Human TIMELESS (CL488-67022, Clone:1B6G3) (red), or 0.8 ug Control Antibody. Cells were fixed and permeabilized with Transcription Factor Staining Buffer Kit (PF00011).