

For Research Use Only

# CoraLite® Plus 488-conjugated MAP2 Monoclonal antibody



Catalog Number: **CL488-67015**

## Basic Information

Catalog Number: CL488-67015	GenBank Accession Number: BC038857	Purification Method: Protein A purification
Size: 1000 µg/ml	GeneID (NCBI): 4133	CloneNo.: 1C3E6
Source: Mouse	UNIPROT ID: P11137	Recommended Dilutions: IF-P 1:50-1:500
Isotype: IgG2b	Full Name: microtubule-associated protein 2	Excitation/Emission maxima wavelengths: 493 nm / 522 nm
Immunogen Catalog Number: AG11349	Calculated MW: 200 kDa	

## Applications

Tested Applications: IF-P, FC (Intra)	Positive Controls: IF-P : rat brain tissue,
Species Specificity: human, mouse, rat	

## Background Information

MAP2 (microtubule-associated protein 2) is a cytoskeleton protein abundant in brain and has important role in neuronal morphogenesis. Multiple high molecular weight (MW) and low molecular weight (MW) MAP2 isoforms are expressed within axons, dendrites, and cell bodies. The expression of MAP2 is regulated in both a tissue- and developmentally specific manner. MAP2 antibodies have been widely used to mark the neuron or dendrite formation.

## Storage

**Storage:**  
Store at -20°C. Avoid exposure to light. Stable for one year after shipment.  
**Storage Buffer:**  
PBS with 50% Glycerol, 0.05% Proclin300, 0.5% BSA, pH 7.3.  
**Aliquoting is unnecessary for -20°C storage**

For technical support and original validation data for this product please contact:

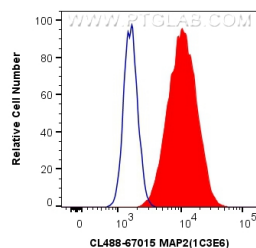
T: 4006900926

E: [Proteintech-CN@ptglab.com](mailto:Proteintech-CN@ptglab.com)

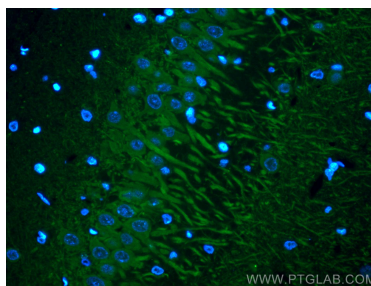
W: [ptgcn.com](http://ptgcn.com)

**This product is exclusively available under Proteintech Group brand and is not available to purchase from any other manufacturer.**

## Selected Validation Data



1X10<sup>6</sup> Neuro-2a cells were intracellularly stained with 0.4 ug CoraLite® Plus 488 Anti-Human MAP2 (CL488-67015, Clone:1C3E6) (red), or 0.4 ug CoraLite® Plus 488 Mouse IgG2b Isotype Control (MPC-11) (CL488-65128, Clone: MPC-11) (blue). Cells were fixed with 4% PFA and permeabilized with Flow Cytometry Perm Buffer (PF00011-C).



Immunofluorescent analysis of (4% PFA) fixed rat brain tissue using CoraLite® Plus 488 MAP2 antibody (CL488-67015, Clone: 1C3E6 ) at dilution of 1:200.