

For Research Use Only

CoraLite® Plus 488-conjugated KIF5A Monoclonal antibody



Catalog Number: CL488-67009

Basic Information

Catalog Number: CL488-67009	GenBank Accession Number: BC146670	Purification Method: Protein G purification
Size: 1000 µg/ml	GeneID (NCBI): 3798	CloneNo.: 1A7E3
Source: Mouse	UNIPROT ID: Q12840	Recommended Dilutions: IF 1:50-1:500
Isotype: IgG1	Full Name: kinesin family member 5A	Excitation/Emission maxima wavelengths: 493 nm / 522 nm
Immunogen Catalog Number: AG15682	Calculated MW: 1032 aa, 117 kDa	
	Observed MW: 130 kDa	

Applications

Tested Applications: IF/ICC	Positive Controls: IF : PC-12 cells,
Species Specificity: Human, mouse, rat, pig	

Background Information

Kinesin superfamily proteins (KIFs) are microtubule-based molecular motors essential for the intracellular transport of various cargos, including organelles, proteins, and RNAs. KIF5A is expressed exclusively in neurons and transports neuronal cargoes into axons and dendrites. KIF5A mutations have been associated with Charcot-Marie-Tooth Type 2, an axonal peripheral neuropathy characterized by progressive loss of peripheral sensation and muscle wasting.

Storage

Storage:
Store at -20°C. Avoid exposure to light. Stable for one year after shipment.
Storage Buffer:
PBS with 50% Glycerol, 0.05% Proclin300, 0.5% BSA, pH 7.3.
Aliquoting is unnecessary for -20°C storage

For technical support and original validation data for this product please contact:

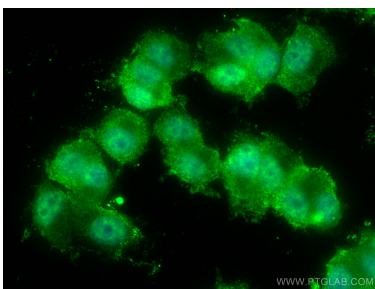
T: 4006900926

E: Proteintech-CN@ptglab.com

W: ptgcn.com

This product is exclusively available under Proteintech Group brand and is not available to purchase from any other manufacturer.

Selected Validation Data



Immunofluorescent analysis of (4% PFA) fixed PC-12 cells using CoraLite® Plus 488 KIF5A antibody (CL488-67009, Clone: 1A7E3) at dilution of 1:200.