

CoraLite® Plus 488-conjugated NUP50 Monoclonal antibody

Catalog Number: **CL488-67001**

Basic Information

Catalog Number:

CL488-67001

Size:

1000 µg/ml

Source:

Mouse

Isotype:

IgG1

Immunogen Catalog Number:

AG15144

GenBank Accession Number:

BC028125

GeneID (NCBI):

10762

UNIPROT ID:

Q9UIK7

Full Name:

nucleoporin 50kDa

Calculated MW:

468 aa, 50 kDa

Observed MW:

50-55 kDa

Purification Method:

Protein G purification

CloneNo.:

1D5A7

**Excitation/Emission maxima
wavelengths:**

493 nm / 522 nm

Applications

Tested Applications:

FC (Intra)

Species Specificity:

Human

Background Information

Nup50 (also known as Npap60) is a nucleoporin that binds directly to importin α and their interaction plays an important role in nuclear import. Nup50 is a mobile nucleoporin localized primarily in the nuclear basket of the nuclear pore complex (NPC) and in the nucleoplasm. Human Nup50 has two isoforms: Npap60L (1-469 aa), and its alternatively spliced isoform, Npap60S (29-469 aa) of Npap60L.

Storage

Storage:

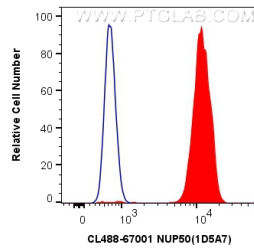
Store at -20°C. Avoid exposure to light. Stable for one year after shipment.

Storage Buffer:

PBS with 50% Glycerol, 0.05% Proclin300, 0.5% BSA, pH 7.3.

Aliquoting is unnecessary for -20°C storage

Selected Validation Data



1X10⁶ HL-60 cells were intracellularly stained with 0.4 ug CoraLite® Plus 488 Anti-Human NUP50 (CL488-67001, Clone:1D5A7) (red), or 0.4 ug Control Antibody. Cells were fixed and permeabilized with Transcription Factor Staining Buffer Kit (PF00011).