

For Research Use Only

# CoraLite® Plus 488-conjugated EPO/Erythropoietin Monoclonal antibody

Catalog Number: **CL488-66975**



## Basic Information

Catalog Number: CL488-66975	GenBank Accession Number: BC093628	Purification Method: Protein A purification
Size: 1000 ug/ml	GeneID (NCBI): 2056	CloneNo.: 1A11F3
Source: Mouse	UNIPROT ID: P01588	Recommended Dilutions: IF/ICC 1:50-1:500
Isotype: IgG2a	Full Name: erythropoietin	Excitation/Emission maxima wavelengths: 493 nm / 522 nm
Immunogen Catalog Number: AG23054	Calculated MW: 193 aa, 21 kDa	

## Applications

Tested Applications: IF/ICC	Positive Controls: IF/ICC : HeLa cells,
Species Specificity: human, mouse	

## Background Information

Erythropoietin (Epo) is a member of the EPO/TPO family and encodes a secreted, glycosylated cytokine composed of four alpha helical bundles. The protein is found in the plasma and regulates red cell production by promoting erythroid differentiation and initiating hemoglobin synthesis. Its effect is realized by binding erythropoietin receptor (EpoR) expressed on erythroid progenitor cells. EpoR, is a glycoprotein expressed on megakaryocytes, erythroid progenitors and endothelial cells. Epo also has neuroprotective activity against a variety of potential brain injuries and antiapoptotic functions in several tissue types.

## Storage

**Storage:**  
Store at -20°C. Avoid exposure to light. Stable for one year after shipment.  
**Storage Buffer:**  
PBS with 50% Glycerol, 0.05% Proclin300, 0.5% BSA, pH 7.3.  
Aliquoting is unnecessary for -20°C storage

For technical support and original validation data for this product please contact:

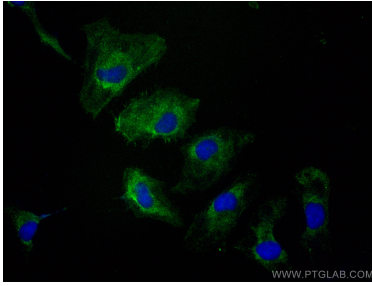
T: 4006900926

E: [Proteintech-CN@ptglab.com](mailto:Proteintech-CN@ptglab.com)

W: [ptgcn.com](http://ptgcn.com)

This product is exclusively available under Proteintech Group brand and is not available to purchase from any other manufacturer.

## Selected Validation Data



Immunofluorescent analysis of (-20°C Ethanol)  
fixed HeLa cells using Coralite® Plus 488  
EPO/Erythropoietin antibody (CL488-66975, Clone:  
1A11F3 ) at dilution of 1:200.