

CoraLite® Plus 488-conjugated LXN Monoclonal antibody

Catalog Number: **CL488-66957**

Basic Information

Catalog Number:

CL488-66957

Size:

1000 µg/ml

Source:

Mouse

Isotype:

IgG1

Immunogen Catalog Number:

AG27922

GenBank Accession Number:

BC005346

GeneID (NCBI):

56925

UNIPROT ID:

Q9BS40

Full Name:

latexin

Calculated MW:

222 aa, 26 kDa

Observed MW:

30 kDa

Purification Method:

Protein G purification

CloneNo.:

3E5A5

Recommended Dilutions:

IF/ICC 1:50-1:500

Excitation/Emission maxima wavelengths:

493 nm / 522 nm

Applications

Tested Applications:

IF/ICC

Species Specificity:

Human, Pig, rabbit

Positive Controls:

IF/ICC : HeLa cells,

Background Information

Latexin, also named as LTXN, LXN, ECI, MUM and TCI, is hardly reversible, non-competitive, and potent inhibitor of CPA1, CPA2 and CPA4. It may function as a neuroprotective mechanism against tau toxicity.

Storage

Storage:

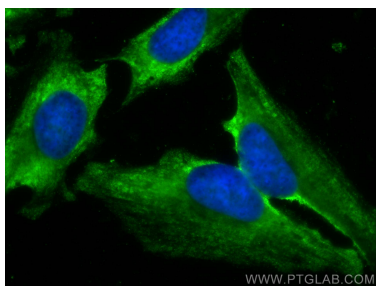
Store at -20°C. Avoid exposure to light. Stable for one year after shipment.

Storage Buffer:

PBS with 50% Glycerol, 0.05% Proclin300, 0.5% BSA, pH 7.3.

Aliquoting is unnecessary for -20°C storage

Selected Validation Data



Immunofluorescent analysis of (-20°C Methanol) fixed HeLa cells using CoraLite® Plus 488 LYN antibody (CL488-66957, Clone: 3E5A5) at dilution of 1:200.