

For Research Use Only

CoraLite® Plus 488-conjugated Integrin Alpha 6 Monoclonal antibody



Catalog Number: CL488-66906

Basic Information

Catalog Number:

CL488-66906

Size:

1000 µg/ml

Source:

Mouse

Isotype:

IgG2b

Immunogen Catalog Number:

AG25866

GenBank Accession Number:

BC136456

GeneID (NCBI):

3655

UNIPROT ID:

P23229

Full Name:

integrin, alpha 6

Calculated MW:

1073 aa, 119 kDa

Observed MW:

115-120 kDa

Purification Method:

Protein A purification

CloneNo.:

2B12A1

Excitation/Emission maxima
wavelengths:

493 nm / 522 nm

Applications

Tested Applications:

FC (Intra)

Species Specificity:

Human

Background Information

Storage

Storage:

Store at -20°C. Avoid exposure to light. Stable for one year after shipment.

Storage Buffer:

PBS with 50% Glycerol, 0.05% Proclin300, 0.5% BSA, pH 7.3.

Aliquoting is unnecessary for -20°C storage

For technical support and original validation data for this product please contact:

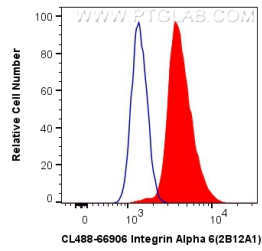
T: 4006900926

E: Proteintech-CN@ptglab.com

W: ptgcn.com

This product is exclusively available under Proteintech Group brand and is not available to purchase from any other manufacturer.

Selected Validation Data



1X10⁶ A431 cells were intracellularly stained with 0.4 ug CoraLite® Plus 488 Anti-Human Integrin Alpha 6 (CL488-66906, Clone:2B12A1) (red), or 0.4 ug Mouse IgG2b Isotype Control (CL488-66360-3, Clone: K11B8C4B5) (blue). Cells were fixed with 4% PFA and permeabilized with Flow Cytometry Perm Buffer (PF00011-C).