

# CoraLite® Plus 488-conjugated Calnexin Monoclonal antibody

Catalog Number: **CL488-66903**

## Basic Information

**Catalog Number:**

CL488-66903

**Size:**

1000 µg/ml

**Source:**

Mouse

**Isotype:**

IgG1

**Immunogen Catalog Number:**

AG25535

**GenBank Accession Number:**

BC003552

**GeneID (NCBI):**

821

**UNIPROT ID:**

P27824

**Full Name:**

calnexin

**Calculated MW:**

90 kDa

**Observed MW:**

90 kDa

**Purification Method:**

Protein G purification

**CloneNo.:**

2A2C6

**Recommended Dilutions:**

IF/ICC 1:50-1:500

**Excitation/Emission maxima wavelengths:**

493 nm / 522 nm

## Applications

**Tested Applications:**

IF/ICC

**Species Specificity:**

Human, mouse, rat

**Positive Controls:**

IF/ICC : HepG2 cells,

## Background Information

Calnexin is a molecular chaperone that resides in the endoplasmic reticulum (ER) and participates in the folding and assembly of newly synthesized proteins. Calnexin is highly abundant in ER and is frequently used as an ER marker.

## Storage

**Storage:**

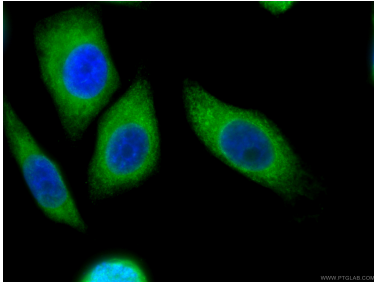
Store at -20°C. Avoid exposure to light. Stable for one year after shipment.

**Storage Buffer:**

PBS with 50% Glycerol, 0.05% Proclin300, 0.5% BSA, pH 7.3.

Aliquoting is unnecessary for -20°C storage

## Selected Validation Data



Immunofluorescent analysis of (4% PFA) fixed HepG2 cells using CL488-66903 (Calnexin antibody) at dilution of 1:100.