

For Research Use Only

# CoraLite® Plus 488-conjugated DLC1 Monoclonal antibody



Catalog Number: CL488-66894

## Basic Information

|   |  |   |
|---|--|---|
| <b>Catalog Number:</b><br>CL488-66894       | <b>GenBank Accession Number:</b><br>BC054511   | <b>Purification Method:</b><br>Protein G purification                 |
| <b>Size:</b><br>1000 µg/ml                  | <b>GeneID (NCBI):</b><br>10395                 | <b>CloneNo.:</b><br>1G10H12   |
| <b>Source:</b><br>Mouse                     | <b>UNIPROT ID:</b><br>Q96QB1                   | <b>Recommended Dilutions:</b><br>IF 1:50-1:500                        |
| <b>Isotype:</b><br>IgG1                     | <b>Full Name:</b><br>deleted in liver cancer 1 | <b>Excitation/Emission maxima<br/>wavelengths:</b><br>493 nm / 522 nm |
| <b>Immunogen Catalog Number:</b><br>AG24404 | <b>Calculated MW:</b><br>171 kDa               |   |
|   | <b>Observed MW:</b><br>115 kDa                 |   |

## Applications

|                                       |   |
|---------------------------------------|---|
| <b>Tested Applications:</b><br>IF/ICC | <b>Positive Controls:</b><br>IF : A375 cells, |
| <b>Species Specificity:</b><br>Human  |   |

## Background Information

Deleted in Liver Cancer 1 (DLC1) is a RhoGAP-containing tumor suppressor that inhibits angiogenesis by repressing VEGF production in epithelial cells. DLC1 is often down-regulated in a variety of cancers, such as those of the liver, lung, breast, stomach, brain, colon and prostate due to either genomic deletion or aberrant DNA methylation.

## Storage

**Storage:**  
Store at -20°C. Avoid exposure to light. Stable for one year after shipment.  
**Storage Buffer:**  
PBS with 50% Glycerol, 0.05% Proclin300, 0.5% BSA, pH 7.3.  
Aliquoting is unnecessary for -20°C storage

For technical support and original validation data for this product please contact:

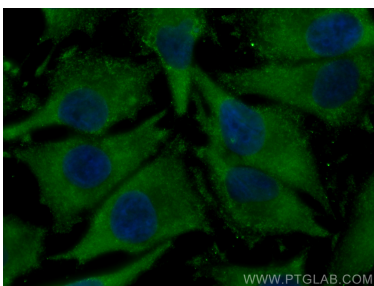
T: 4006900926

E: [Proteintech-CN@ptglab.com](mailto:Proteintech-CN@ptglab.com)

W: [ptgcn.com](http://ptgcn.com)

This product is exclusively available under Proteintech Group brand and is not available to purchase from any other manufacturer.

## Selected Validation Data



Immunofluorescent analysis of (-20°C Methanol) fixed A375 cells using CoraLite® Plus 488 DLC1 antibody (CL488-66894, Clone: 1G10H12 ) at dilution of 1:200.