

For Research Use Only

CoraLite® Plus 488-conjugated KPNA2 Monoclonal antibody



Catalog Number: CL488-66870

Basic Information

Catalog Number:

CL488-66870

Size:

1000 µg/ml

Source:

Mouse

Isotype:

IgG1

Immunogen Catalog Number:

AG28386

GenBank Accession Number:

BC005978

GeneID (NCBI):

3838

UNIPROT ID:

P52292

Full Name:

karyopherin alpha 2 (RAG cohort 1,
importin alpha 1)

Calculated MW:

57.8 kDa

Observed MW:

55-58 kDa

Purification Method:

Protein G purification

CloneNo.:

2G9C1

Recommended Dilutions:

IF 1:50-1:500

Excitation/Emission maxima

wavelengths:

493 nm / 522 nm

Applications

Tested Applications:

FC (Intra), IF/ICC

Species Specificity:

Human

Positive Controls:

IF : MCF-7 cells,

Background Information

KPNA2 (karyopherin α 2) is a nuclear import factor involved in the nucleocytoplasmic transport system. It is functionally involved in the tumor progression and is elevated in multiple cancers. KPNA2 expression may be a useful prognostic biomarker to monitor cancer prognosis.

Storage

Storage:

Store at -20°C. Avoid exposure to light. Stable for one year after shipment.

Storage Buffer:

PBS with 50% Glycerol, 0.05% Proclin300, 0.5% BSA, pH 7.3.

Aliquoting is unnecessary for -20°C storage

For technical support and original validation data for this product please contact:

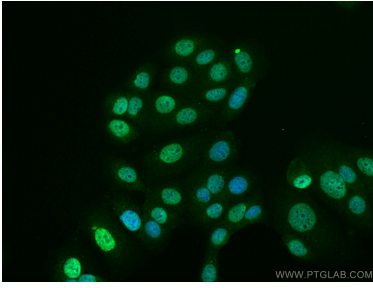
T: 4006900926

E: Proteintech-CN@ptglab.com

W: ptgcn.com

This product is exclusively available under Proteintech Group brand and is not available to purchase from any other manufacturer.

Selected Validation Data



Immunofluorescent analysis of (4% PFA) fixed MCF-7 cells using CoraLite® Plus 488 KPNA2 antibody (CL488-66870, Clone: 2G9C1) at dilution of 1:200.



1X10⁶ HEK-293T cells were intracellularly stained with 0.4 ug CoraLite® Plus 488 Anti-Human KPNA2 (CL488-66870, Clone:2G9C1) (red), or 0.4 ug Isotype Control. Cells were fixed and permeabilized with Transcription Factor Staining Buffer Kit (PF00011).