

CoraLite® Plus 488-conjugated Annexin A10 Monoclonal antibody

Catalog Number: **CL488-66869**

Basic Information

Catalog Number:

CL488-66869

Size:

1000 µg/ml

Source:

Mouse

Isotype:

IgG2a

Immunogen Catalog Number:

AG27098

GenBank Accession Number:

BC007320

GeneID (NCBI):

11199

UNIPROT ID:

Q9UJ72

Full Name:

annexin A10

Calculated MW:

37 kDa

Observed MW:

37 kDa

Purification Method:

Protein A purification

CloneNo.:

1A7A11

Recommended Dilutions:

IF-P 1:50-1:500

Excitation/Emission maxima wavelengths:

493 nm / 522 nm

Applications

Tested Applications:

IF-P

Species Specificity:

Human, pig, mouse

Positive Controls:

IF-P : human colon cancer tissue,

Background Information

ANXA10, member of the Annexin family, is a calcium-and-phospholipid-binding protein. It is implicated in multiple physiological processes, including growth regulation, cell division, apoptosis, and differentiation. ANXA10 was recently observed to be upregulated in Barrett's esophagus, oral cancers, pancreatic cancer and colon cancer.

Storage

Storage:

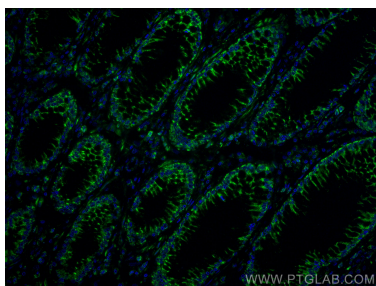
Store at -20°C. Avoid exposure to light.

Storage Buffer:

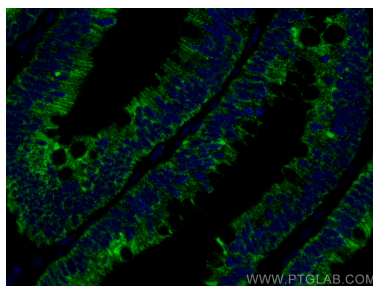
PBS with 50% Glycerol, 0.05% Proclin300, 0.5% BSA, pH 7.3.

Aliquoting is unnecessary for -20°C storage

Selected Validation Data



Immunofluorescent analysis of (4% PFA) fixed human colon cancer tissue using CoraLite® Plus 488 Annexin A10 antibody (CL488-66869, Clone: 1A7A11) at dilution of 1:200.



Immunofluorescent analysis of (4% PFA) fixed human colon cancer tissue using CoraLite® Plus 488 Annexin A10 antibody (CL488-66869, Clone: 1A7A11) at dilution of 1:200.