

For Research Use Only

CoraLite® Plus 488-conjugated SMO Monoclonal antibody



Catalog Number: **CL488-66851**

Basic Information

Catalog Number:

CL488-66851

Size:

2000 µg/ml

Source:

Mouse

Isotype:

IgG2b

Immunogen Catalog Number:

AG25861

GenBank Accession Number:

BC009989

GeneID (NCBI):

6608

UNIPROT ID:

Q99835

Full Name:

smoothened homolog (Drosophila)

Calculated MW:

787 aa, 86 kDa

Purification Method:

Protein A purification

CloneNo.:

2B10A11

Recommended Dilutions:

IF 1:50-1:500

Excitation/Emission maxima

wavelengths:

493 nm / 522 nm

Applications

Tested Applications:

IF/ICC

Species Specificity:

Human, Canine

Positive Controls:

IF : MDCK cells,

Background Information

Smoothened (SMO) is a G protein-coupled receptor that is a component of the hedgehog (Hh) signaling pathway and is conserved from flies to humans. The Hh pathway plays central roles in animal development and stem-cell function. Defects in Hh signalling lead to birth defects and cancer in humans. Expressed on the primary cilium, SMO interacts with the patched protein, a receptor for Hh proteins.

Storage

Storage:

Store at -20°C. Avoid exposure to light. Stable for one year after shipment.

Storage Buffer:

PBS with 50% Glycerol, 0.05% Proclin300, 0.5% BSA, pH 7.3.

Aliquoting is unnecessary for -20°C storage

For technical support and original validation data for this product please contact:

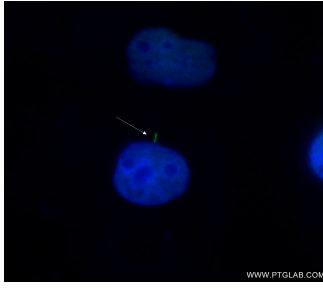
T: 4006900926

E: Proteintech-CN@ptglab.com

W: ptgcn.com

This product is exclusively available under Proteintech Group brand and is not available to purchase from any other manufacturer.

Selected Validation Data



Immunofluorescent analysis of (-20°C Ethanol) fixed MDCK cells using CL488-66851 (SMO antibody) at dilution of 1:100.