

For Research Use Only

# CoraLite® Plus 488-conjugated JTV1 Monoclonal antibody

Catalog Number: CL488-66848



## Basic Information

Catalog Number:

CL488-66848

Source:

Mouse

Isotype:

IgG2b

Immunogen Catalog Number:

AG0675

GenBank Accession Number:

BC002853

GeneID (NCBI):

7965

UNIPROT ID:

Q13155

Full Name:

JTV1 gene

Calculated MW:

36 kDa

Observed MW:

32-36 kDa

Purification Method:

Protein A purification

CloneNo.:

1D6B5

Recommended Dilutions:

WB: 1:500-1:1000

FC (Intra): 0.80 ug per 10<sup>6</sup> cells in a 100 µl suspension

Excitation/Emission maxima wavelengths:

493 nm / 522 nm

## Applications

Tested Applications:

WB, FC (Intra)

Species Specificity:

human, mouse, rat

Positive Controls:

WB : Jurkat cells, HeLa cells

FC (Intra) : HeLa cells,

## Background Information

JTV1, also named p38, AIMP2, was first known as a factor associated with macromolecular protein complex, which consists of several different aminoacyl-tRNA synthetases. JTV1 is a scaffold protein required for the assembly and stability of the multi-tRNA synthetase complex. JTV1 could act as a mediator of TGF-beta signaling and its functional importance in the control of MYC during lung differentiation. Blocks MDM2-mediated ubiquitination and degradation of p53/TP53. Functions as a proapoptotic factor.

## Storage

Storage:

Store at -20°C. Avoid exposure to light. Stable for one year after shipment.

Storage Buffer:

PBS with 50% glycerol, 0.05% Proclin300, 0.5% BSA, pH7.3

Aliquoting is unnecessary for -20°C storage

For technical support and original validation data for this product please contact:

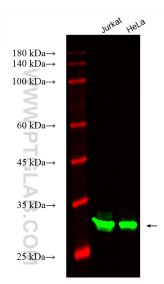
T: 4006900926

E: [Proteintech-CN@ptglab.com](mailto:Proteintech-CN@ptglab.com)

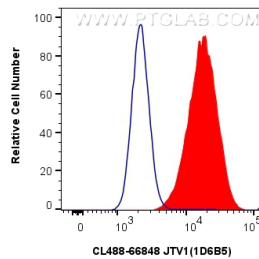
W: [ptgcn.com](http://ptgcn.com)

This product is exclusively available under Proteintech Group brand and is not available to purchase from any other manufacturer.

## Selected Validation Data



Various lysates were subjected to SDS PAGE followed by western blot with CL488-66848 (JTV1 antibody) at dilution of 1:800 incubated at room temperature for 1.5 hours.



$1 \times 10^6$  HeLa cells were intracellularly stained with 0.8  $\mu$ g CoraLite® Plus 488-conjugated JTV1 Monoclonal antibody (CL488-66848, Clone:1D6B5) (red), or 0.8  $\mu$ g CoraLite® Plus 488 Mouse IgG2b isotype control (11B8C4) (CL488-66360-3, Clone: 11B8C4) (blue). Cells were fixed with 4% PFA and permeabilized with Flow Cytometry Perm Buffer.