

For Research Use Only

# CoraLite® Plus 488-conjugated APOE Monoclonal antibody

Catalog Number: CL488-66830

Featured Product



## Basic Information

Catalog Number:

CL488-66830

Concentration:

1000 ug/ml

Source:

Mouse

Isotype:

IgG1

Immunogen Catalog Number:

AG28186

GenBank Accession Number:

BC003557

GeneID (NCBI):

348

UNIPROT ID:

P02649

Full Name:

Apolipoprotein E

Calculated MW:

36 kDa

Observed MW:

34-36 kDa

Purification Method:

Protein G purification

CloneNo.:

1B2C9

Recommended Dilutions:

IF/ICC 1:50-1:500

Excitation/Emission maxima wavelengths:

493 nm / 522 nm

## Applications

Tested Applications:

IF/ICC, FC (Intra)

Species Specificity:

human, mouse

Positive Controls:

IF/ICC : HepG2 cells,

## Background Information

The apolipoprotein E (APOE) is a 299-amino acid polypeptide that mediates the binding, internalization, and catabolism of lipoprotein particles, and also serve as a ligand for the LDL (APO B/E) receptor and for the specific APOE receptor (chylomicron remnant) of hepatic tissues. The very strong association of the APOE 4 allele with AD risk and its role in the accumulation of amyloid  $\beta$  in brains of people and animal models solidify the biological relevance of APOE isoforms but do not provide mechanistic insight.

## Storage

Storage:

Store at -20°C. Avoid exposure to light. Stable for one year after shipment.

Storage Buffer:

PBS with 50% Glycerol, 0.05% Proclin300, 0.5% BSA, pH 7.3.

Aliquoting is unnecessary for -20°C storage

For technical support and original validation data for this product please contact:

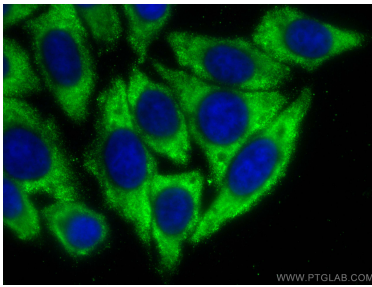
T: 4006900926

E: [Proteintech-CN@ptglab.com](mailto:Proteintech-CN@ptglab.com)

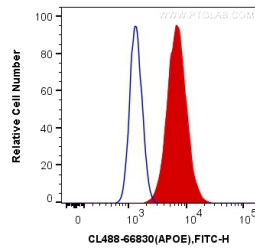
W: [ptgcn.com](http://ptgcn.com)

This product is exclusively available under Proteintech Group brand and is not available to purchase from any other manufacturer.

## Selected Validation Data



Immunofluorescent analysis of (-20°C Ethanol) fixed HepG2 cells using CoraLite® Plus 488 APOE antibody (CL488-66830, Clone: 1B2C9) at dilution of 1:200.



1X10<sup>6</sup> HepG2 cells were intracellularly stained with 0.4 ug CoraLite® Plus 488 Anti-Human APOE (CL488-66830, Clone:1B2C9) (red), or 0.4 ug Mouse IgG1 Isotype Control (CL488-66360, Clone: T1F8D3F10) (blue). Cells were fixed with 4% PFA and permeabilized with Flow Cytometry Perm Buffer (PF00011-C).