

For Research Use Only

CoraLite® Plus 488-conjugated IL-12RB1 Monoclonal antibody

Catalog Number: CL488-66829



Basic Information

Catalog Number:	CL488-66829	GenBank Accession Number:	BC029121	Purification Method:	Protein G purification
Size:	1000 ug/ml	GeneID (NCBI):	3594	CloneNo.:	1E10E10
Source:	Mouse	UNIPROT ID:	P42701	Excitation/Emission maxima wavelengths:	493 nm / 522 nm
Isotype:	IgG1	Full Name:	interleukin 12 receptor, beta 1		
Immunogen Catalog Number:	AG6920	Calculated MW:	662 aa, 73 kDa		
		Observed MW:	100-110 kDa		

Applications

Tested Applications:
FC (Intra)
Species Specificity:
human

Background Information

IL12RB1, also named as Interleukin-12 receptor subunit beta-1 or CD212, is a 662 amino acid protein, which contains 5 fibronectin type-III domains and belongs to the type I cytokine receptor family. Type 2 subfamily. IL12RB1 localizes in the membrane and functions as an interleukin receptor which binds interleukin-12 with low affinity and is involved in IL12 transduction. Associated with IL12RB2 it forms a functional, high affinity receptor for IL12. Associates also with IL23R to form the interleukin-23 receptor which functions in IL23 signal transduction probably through activation of the Jak-Stat signaling cascade.

Storage

Storage:
Store at -20°C. Avoid exposure to light. Stable for one year after shipment.
Storage Buffer:
PBS with 50% Glycerol, 0.05% Proclin300, 0.5% BSA, pH 7.3.
Aliquoting is unnecessary for -20°C storage

For technical support and original validation data for this product please contact:

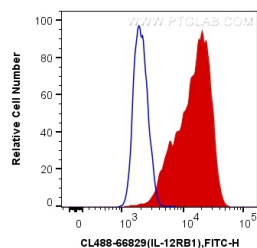
T: 4006900926

E: Proteintech-CN@ptglab.com

W: ptgcn.com

This product is exclusively available under Proteintech Group brand and is not available to purchase from any other manufacturer.

Selected Validation Data



1X10⁶ K-562 cells were intracellularly stained with 0.4 ug CoraLite® Plus 488 Anti-Human IL-12RB1 (CL488-66829, Clone:1E10E10) (red), or 0.4 ug Control Antibody. Cells were fixed with 4% PFA and permeabilized with Flow Cytometry Perm Buffer (PF00011-C).