

For Research Use Only

# CoraLite® Plus 488-conjugated CFP Monoclonal antibody



Catalog Number: CL488-66788

## Basic Information

<b>Catalog Number:</b> CL488-66788	<b>GenBank Accession Number:</b> BC015756	<b>Purification Method:</b> Protein G purification
<b>Size:</b> 1000 µg/ml	<b>GeneID (NCBI):</b> 5199	<b>CloneNo.:</b> 1D5A9
<b>Source:</b> Mouse	<b>UNIPROT ID:</b> P27918	<b>Recommended Dilutions:</b> WB 1:500-1:1000
<b>Isotype:</b> IgG1	<b>Full Name:</b> complement factor properdin	<b>Excitation/Emission maxima wavelengths:</b> 493 nm / 522 nm
<b>Immunogen Catalog Number:</b> AG9798	<b>Calculated MW:</b> 469 aa, 51 kDa	
	<b>Observed MW:</b> 50 kDa, 100 kDa, 150 kDa	

## Applications

<b>Tested Applications:</b> WB	<b>Positive Controls:</b> WB : Jurkat cells,
<b>Species Specificity:</b> Human, pig, rat	

## Background Information

CFP, also named as Properdin or CFP, is a 469 amino acid protein, which contains 7 TSP type-1 domains. CFP as secreted protein is a positive regulator of the alternate pathway of complement. It binds to and stabilizes the C3- and C5-convertase enzyme complexes. Properdin deficiency poses a significant risk for severe meningococcal infections (PMID: 22229731). Properdin may be novel biomarker for future risk of type 2 diabetes (PMID: 22338105). In plasma, properdin exists as dimers, trimers or tetramers.

## Storage

**Storage:**  
Store at -20°C. Avoid exposure to light. Stable for one year after shipment.  
**Storage Buffer:**  
PBS with 50% Glycerol, 0.05% Proclin300, 0.5% BSA, pH 7.3.  
Aliquoting is unnecessary for -20°C storage

For technical support and original validation data for this product please contact:

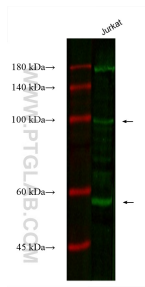
T: 4006900926

E: [Proteintech-CN@ptglab.com](mailto:Proteintech-CN@ptglab.com)

W: [ptgcn.com](http://ptgcn.com)

**This product is exclusively available under Proteintech Group brand and is not available to purchase from any other manufacturer.**

## Selected Validation Data



Various lysates were subjected to SDS PAGE followed by western blot with CL488-66788 (CFP antibody) at dilution of 1:800 incubated at room temperature for 1.5 hours.