

CoraLite® Plus 488-conjugated Syntaxin 16 Monoclonal antibody

Catalog Number: **CL488-66775**

Basic Information

Catalog Number: CL488-66775	GenBank Accession Number: BC019042	Purification Method: Protein G purification
Size: 1000 µg/ml	GeneID (NCBI): 8675	CloneNo.: 4A9D8
Source: Mouse	UNIPROT ID: O14662	Recommended Dilutions: IF/ICC 1:50-1:500
Isotype: IgG1	Full Name: syntaxin 16	Excitation/Emission maxima wavelengths: 493 nm / 522 nm
Immunogen Catalog Number: AG27926	Calculated MW: 37 kDa	
	Observed MW: 37 kDa	

Applications

Tested Applications: IF	Positive Controls: IF/ICC : HepG2 cells,
Species Specificity: Human	

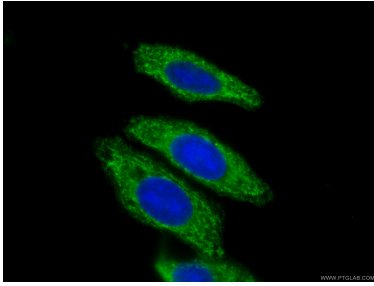
Background Information

Syntaxin 16 (STX16), also named as SYN16, belongs to the syntaxin family. Syntaxins are target membrane SNAREs (Soluble NSF attachment protein receptors) which are membrane components that determine the specificity of the docking and fusion of vesicles to target membranes. STX16 is localized to the Golgi apparatus.

Storage

Storage:
Store at -20°C. Avoid exposure to light. Stable for one year after shipment.
Storage Buffer:
PBS with 50% Glycerol, 0.05% Proclin300, 0.5% BSA, pH 7.3.
Aliquoting is unnecessary for -20°C storage

Selected Validation Data



Immunofluorescent analysis of (-20°C Ethanol) fixed HepG2 cells using CL488-66775 (Syntaxin 16 antibody) at dilution of 1:100 .