

CoraLite[®] Plus 488-conjugated SSTR5 Monoclonal antibody

Catalog Number: **CL488-66772**

Basic Information

Catalog Number:

CL488-66772

Size:

1000 µg/ml

Source:

Mouse

Isotype:

IgG1

Immunogen Catalog Number:

AG18615

GenBank Accession Number:

BC146576

GeneID (NCBI):

6755

UNIPROT ID:

P35346

Full Name:

somatostatin receptor 5

Calculated MW:

364 aa, 39 kDa

Observed MW:

41 kDa

Purification Method:

Protein G purification

CloneNo.:

2B10D8

Recommended Dilutions:

IF-P 1:50-1:500

**Excitation/Emission maxima
wavelengths:**

493 nm / 522 nm

Applications

Tested Applications:

IF-P

Species Specificity:

Human, Mouse, Rat

Positive Controls:

IF-P: mouse kidney tissue,

Background Information

Somatostatin is a widely distributed peptide with a broad range of biological actions. Two biological forms of somatostatin exist: somatostatin-14 and -28. Somatostatin receptors (SSTR1, 2A and B, 3, 4 and 5) belong to the G protein coupled receptor family and have a wide expression pattern in both normal tissues and solid tumors (PMID: 23872332). SSTR5 has greater affinity for somatostatin-28 than somatostatin-14 (PMID: 8373420).

Storage

Storage:

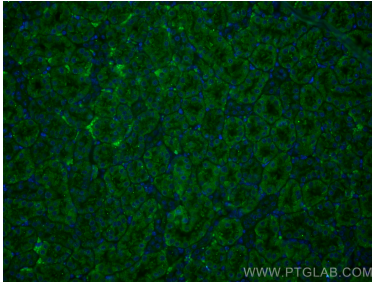
Store at -20°C. Avoid exposure to light. Stable for one year after shipment.

Storage Buffer:

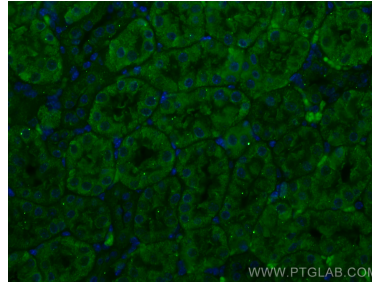
PBS with 50% Glycerol, 0.05% Proclin300, 0.5% BSA, pH 7.3.

Aliquoting is unnecessary for -20°C storage

Selected Validation Data



Immunofluorescent analysis of (4% PFA) fixed mouse kidney tissue using Coralite® Plus 488 SSTR5 antibody (CL488-66772, Clone: 2B10D8) at dilution of 1:200.



Immunofluorescent analysis of (4% PFA) fixed mouse kidney tissue using Coralite® Plus 488 SSTR5 antibody (CL488-66772, Clone: 2B10D8) at dilution of 1:200.