

For Research Use Only

CoraLite® Plus 488-conjugated Catalase Monoclonal antibody

Catalog Number: CL488-66765

Featured Product



Basic Information

Catalog Number:

CL488-66765

Size:

1000 µg/ml

Source:

Mouse

Isotype:

IgG1

Immunogen Catalog Number:

AG16916

GenBank Accession Number:

BC112219

GeneID (NCBI):

847

UNIPROT ID:

P04040

Full Name:

catalase

Calculated MW:

60 kDa

Observed MW:

60 kDa

Purification Method:

Protein G purification

CloneNo.:

1F8D7

Recommended Dilutions:

IF/ICC 1:50-1:500

Excitation/Emission maxima wavelengths:

493 nm / 522 nm

Applications

Tested Applications:

IF/ICC

Species Specificity:

human, mouse, rat, pig

Positive Controls:

IF/ICC : HepG2 cells,

Background Information

Catalase belongs to the catalase family. CAT occurs in almost all aerobically respiring organisms and serves to protect cells from the toxic effects of hydrogen peroxide. CAT promotes growth of cells including T-cells, B-cells, myeloid leukemia cells, melanoma cells, mastocytoma cells and normal and transformed fibroblast cells. CAT catalyzes the reaction: $2\text{H}_2\text{O}_2 = \text{O}_2 + 2\text{H}_2\text{O}$. Defects in CAT are the cause of acatalasia (ACATLAS) which also known as acatalasemia.

Storage

Storage:

Store at -20°C. Avoid exposure to light. Stable for one year after shipment.

Storage Buffer:

PBS with 50% Glycerol, 0.05% Proclin300, 0.5% BSA, pH 7.3.

Aliquoting is unnecessary for -20°C storage

For technical support and original validation data for this product please contact:

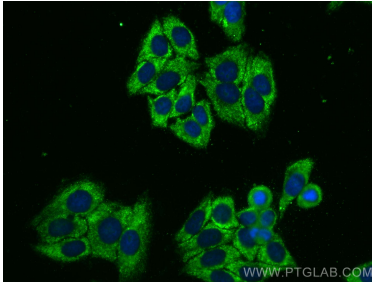
T: 4006900926

E: Proteintech-CN@ptglab.com

W: ptgcn.com

This product is exclusively available under Proteintech Group brand and is not available to purchase from any other manufacturer.

Selected Validation Data



Immunofluorescent analysis of (-20°C Ethanol)
fixed HepG2 cells using CoraLite® Plus 488
Catalase antibody (CL488-66765, Clone: 1F8D7) at
dilution of 1:200.