

For Research Use Only

CoraLite® Plus 488-conjugated PLA2G4D Monoclonal antibody



Catalog Number: **CL488-66752**

Basic Information

Catalog Number:

CL488-66752

Size:

1000 µg/ml

Source:

Mouse

Isotype:

IgG1

Immunogen Catalog Number:

AG4178

GenBank Accession Number:

BC034571

GeneID (NCBI):

283748

UNIPROT ID:

Q86XP0

Full Name:

phospholipase A2, group IVD
(cytosolic)

Calculated MW:

818 aa, 92 kDa

Observed MW:

92 kDa

Purification Method:

Protein G purification

CloneNo.:

2E2A10

Recommended Dilutions:

IF/ICC 1:50-1:500

Excitation/Emission maxima
wavelengths:

493 nm / 522 nm

Applications

Tested Applications:

IF/ICC

Species Specificity:

Human

Positive Controls:

IF/ICC : HepG2 cells,

Background Information

PLA2G4D(Cytosolic phospholipase A2 delta) belongs to the phospholipase A2 enzyme family, catalyzes the hydrolysis of glycerophospholipids at the sn-2 position and then liberate free fatty acids and lysophospholipids. PLA2G4D expression is specifically upregulated in the upper epidermis of patients with inflammatory skin diseases(PMID:14709560).

Storage

Storage:

Store at -20°C. Avoid exposure to light. Stable for one year after shipment.

Storage Buffer:

PBS with 50% Glycerol, 0.05% Proclin300, 0.5% BSA, pH 7.3.

Aliquoting is unnecessary for -20°C storage

For technical support and original validation data for this product please contact:

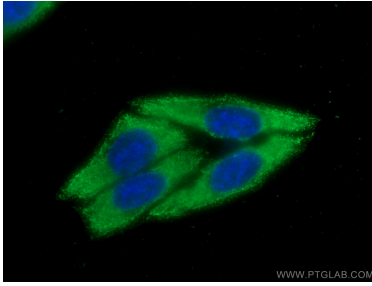
T: 4006900926

E: Proteintech-CN@ptglab.com

W: ptgcn.com

This product is exclusively available under Proteintech Group brand and is not available to purchase from any other manufacturer.

Selected Validation Data



Immunofluorescent analysis of (-20°C Ethanol)
fixed HepG2 cells using CoraLite® Plus 488
PLA2G4D antibody (CL488-66752, Clone: 2E2A10)
at dilution of 1:200.