

# CoraLite® Plus 488-conjugated SRF Monoclonal antibody

Catalog Number: **CL488-66742****Featured Product**

## Basic Information

**Catalog Number:**

CL488-66742

**Size:**

1000 µg/ml

**Source:**

Mouse

**Isotype:**

IgG2a

**Immunogen Catalog Number:**

AG10386

**GenBank Accession Number:**

BC048211

**GeneID (NCBI):**

6722

**UNIPROT ID:**

P11831

**Full Name:**serum response factor (c-fos serum  
response element-binding  
transcription factor)**Calculated MW:**

508 aa, 52 kDa

**Purification Method:**

Protein A purification

**CloneNo.:**

1G8F4

**Recommended Dilutions:**

IF/ICC 1:50-1:500

**Excitation/Emission maxima  
wavelengths:**

493 nm / 522 nm

## Applications

**Tested Applications:**

IF/ICC

**Species Specificity:**

Human

**Positive Controls:**

IF/ICC : HepG2 cells,

## Background Information

Serum response factor (SRF) is a transcription factor that binds the serum response element (SRE), a sequence that mediates the transient response of many cellular genes to growth stimulation. SRF is required for cardiac differentiation and maturation due to the role in cardiac cell growth and muscle gene regulation. The full-length SRF protein is 67 kDa and molecular weight of cleaved fragment is 50 kDa and 20 kDa (PMID: 21769134).

## Storage

**Storage:**

Store at -20°C. Avoid exposure to light. Stable for one year after shipment.

**Storage Buffer:**

PBS with 50% Glycerol, 0.05% Proclin300, 0.5% BSA, pH 7.3.

Aliquoting is unnecessary for -20°C storage

For technical support and original validation data for this product please contact:

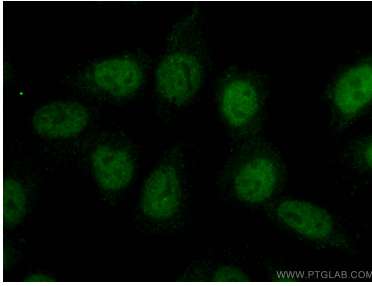
T: 4006900926

E: [Proteintech-CN@ptglab.com](mailto:Proteintech-CN@ptglab.com)W: [ptgcn.com](http://ptgcn.com)

This product is exclusively available under Proteintech Group brand and is not available to purchase from any other manufacturer.

---

## Selected Validation Data



Immunofluorescent analysis of (4% PFA) fixed HepG2 cells using CoraLite® Plus 488-conjugated SRF antibody (CL488-66742, Clone: 1G8F4) at dilution of 1:100.