

For Research Use Only

CoraLite® Plus 488-conjugated EPHA2 Monoclonal antibody



Catalog Number: CL488-66736

Featured Product

Basic Information

Catalog Number:

CL488-66736

Size:

1000 µg/ml

Source:

Mouse

Isotype:

IgG1

Immunogen Catalog Number:

AG22566

GenBank Accession Number:

BC037166

GeneID (NCBI):

1969

UNIPROT ID:

P29317

Full Name:

EPH receptor A2

Calculated MW:

976 aa, 108 kDa

Observed MW:

130 kDa

Purification Method:

Protein G purification

CloneNo.:

1A9C3

Excitation/Emission maxima
wavelengths:

493 nm / 522 nm

Applications

Tested Applications:

FC (Intra)

Species Specificity:

Human

Background Information

Ephrin type-A receptor 2 (EPHA2), belongs to the receptor tyrosine kinases (RTKs) family, that binds promiscuously membrane-bound ephrin-A family ligands residing on adjacent cells, leading to contact-dependent bidirectional signaling into neighboring cells. Research studies have shown that Eph receptors and ligands may be involved in many diseases including cancer (PMID: 11114742). The "reverse signaling" function, whereby the cytoplasmic domain becomes tyrosine phosphorylated, allows interactions with other proteins that may activate signaling pathways in the ligand-expressing cells.

Storage

Storage:

Store at -20°C. Avoid exposure to light. Stable for one year after shipment.

Storage Buffer:

PBS with 50% Glycerol, 0.05% Proclin300, 0.5% BSA, pH 7.3.

Aliquoting is unnecessary for -20°C storage

For technical support and original validation data for this product please contact:

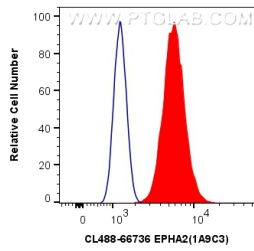
T: 4006900926

E: Proteintech-CN@ptglab.com

W: ptgcn.com

This product is exclusively available under Proteintech Group brand and is not available to purchase from any other manufacturer.

Selected Validation Data



1X10⁶ A431 cells were intracellularly stained with 0.4 ug CoraLite® Plus 488 Anti-Human EPHA2 (CL488-66736, Clone:1A9C3) (red), or 0.4 ug Control Antibody. Cells were fixed with 4% PFA and permeabilized with Flow Cytometry Perm Buffer (PF00011-C).