

CoraLite® Plus 488-conjugated HSPH1 Monoclonal antibody

Catalog Number: **CL488-66723**

Basic Information

Catalog Number: CL488-66723	GenBank Accession Number: BC037553	Purification Method: Protein G purification
Size: 1000 µg/ml	GeneID (NCBI): 10808	CloneNo.: 3H5A5
Source: Mouse	UNIPROT ID: Q92598	Recommended Dilutions: IF/ICC 1:50-1:500
Isotype: IgG1	Full Name: heat shock 105kDa/110kDa protein 1	Excitation/Emission maxima wavelengths: 493 nm / 522 nm
Immunogen Catalog Number: AG27521	Calculated MW: 858 aa, 97 kDa	
	Observed MW: 110 kDa	

Applications

Tested Applications: IF/ICC	Positive Controls: IF/ICC : HeLa cells,
Species Specificity: Human	

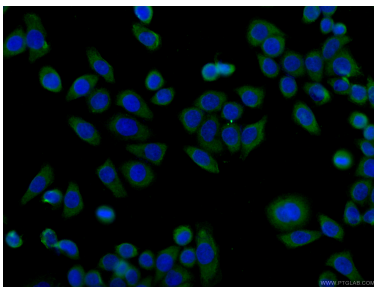
Background Information

HSP105, also known as HSP110 or HSPH1, belongs to the heat shock protein (HSP) family. Human HSP105 is a high-molecular-weight chaperone protein expressed at constitutively low levels as a cytoplasmic α -isoform and as an inducible nuclear β -isoform on exposure to various forms of stress. HSP105 is constitutively overexpressed in several solid tumors, including melanoma, breast, thyroid, and gastroenteric cancers, and exerts antiapoptotic functions. Recently HSP105 has been identified as a novel candidate biomarker of lymphoma aggressiveness. Western blot analysis using this antibody detected the phosphorylated protein around 110 kDa in various lysates.

Storage

Storage:
Store at -20°C. Avoid exposure to light. Stable for one year after shipment.
Storage Buffer:
PBS with 50% Glycerol, 0.05% Proclin300, 0.5% BSA, pH 7.3.
Aliquoting is unnecessary for -20°C storage

Selected Validation Data



Immunofluorescent analysis of (-20°C Ethanol) fixed HeLa cells using CL488-66723 (HSPH1 antibody) at dilution of 1:100.