

For Research Use Only

CoraLite® Plus 488-conjugated GSTP1 Monoclonal antibody



Catalog Number: **CL488-66715**

Featured Product

Basic Information

Catalog Number:

CL488-66715

Size:

1000 µg/ml

Source:

Mouse

Isotype:

IgG1

Immunogen Catalog Number:

AG8880

GenBank Accession Number:

BC010915

GeneID (NCBI):

2950

UNIPROT ID:

P09211

Full Name:

glutathione S-transferase pi 1

Calculated MW:

210 aa, 23 kDa

Observed MW:

23 kDa

Purification Method:

Protein G purification

CloneNo.:

2D4A6

Recommended Dilutions:

IF/ICC 1:50-1:500

Excitation/Emission maxima
wavelengths:

493 nm / 522 nm

Applications

Tested Applications:

IF/ICC

Species Specificity:

Human, Rat

Positive Controls:

IF/ICC : HepG2 cells,

Background Information

Storage

Storage:

Store at -20°C. Avoid exposure to light.

Storage Buffer:

PBS with 50% Glycerol, 0.05% Proclin300, 0.5% BSA, pH 7.3.

Aliquoting is unnecessary for -20°C storage

For technical support and original validation data for this product please contact:

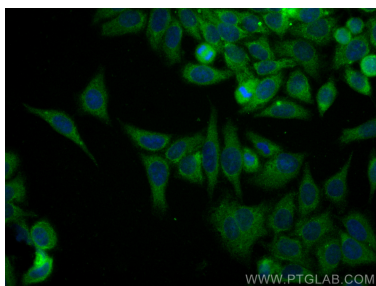
T: 4006900926

E: Proteintech-CN@ptglab.com

W: ptgcn.com

This product is exclusively available under Proteintech Group brand and is not available to purchase from any other manufacturer.

Selected Validation Data



Immunofluorescent analysis of (-20°C Methanol) fixed HepG2 cells using CoraLite® Plus 488 GSTP1 antibody (CL488-66715, Clone: 2D4A6) at dilution of 1:200.